

***The evidence base for nursing practice:
The potential impact of spearheading
leading-edge nursing research on
improving global health***

Alan Pearson AM

Professor of Evidence Based Healthcare and Executive Director

The Joanna Briggs Institute, Faculty of Health Sciences

The University of Adelaide, Australia



Overview

- The existing evidence base for nursing practice;
- Contemporary nursing's most urgent evidence needs; and
- The extent to which the burgeoning nursing research enterprise truly addresses these evidence needs of nurses.

The Evidence Base for Nursing Practice

- Evidence is the basis of belief; ‘...the available facts, circumstances etc supporting or otherwise a belief, proposition etc or indicating whether a thing is true or valid...’

Pearsall J, Trumble B, eds. Oxford English Reference Dictionary. Oxford: Oxford University Press, 1995; 487

The FAME Scale



Feasibility

Feasibility is the extent to which an activity is practical and practicable. Clinical feasibility is about whether or not an activity or intervention is physically, culturally or financially practical or possible within a given context.

Pearson, A., Wiechula, R., Court, A. and Lockwood, C. (2005) The JBI model of evidence-based healthcare. JBI Reports. 3:8, 207- 216

Appropriateness

Appropriateness is the extent to which an intervention or activity fits with or is apt in a situation. Clinical appropriateness is about how an activity or intervention relates to the cultural or ethical context in which care is given.

Pearson, A., Wiechula, R., Court, A. and Lockwood, C. (2005) The JBI model of evidence-based healthcare. JBI Reports. 3:8, 207- 216

Meaningfulness

Meaningfulness refers to the meanings patients associate with an intervention or activity as a result of their experience of it. Meaningfulness relates to the personal experience, opinions, values, thoughts, beliefs, and interpretations of patients or clients.

Pearson, A., Wiechula, R., Court, A. and Lockwood, C. (2005) The JBI model of evidence-based healthcare. JBI Reports. 3:8, 207- 216

Effectiveness (Effects)

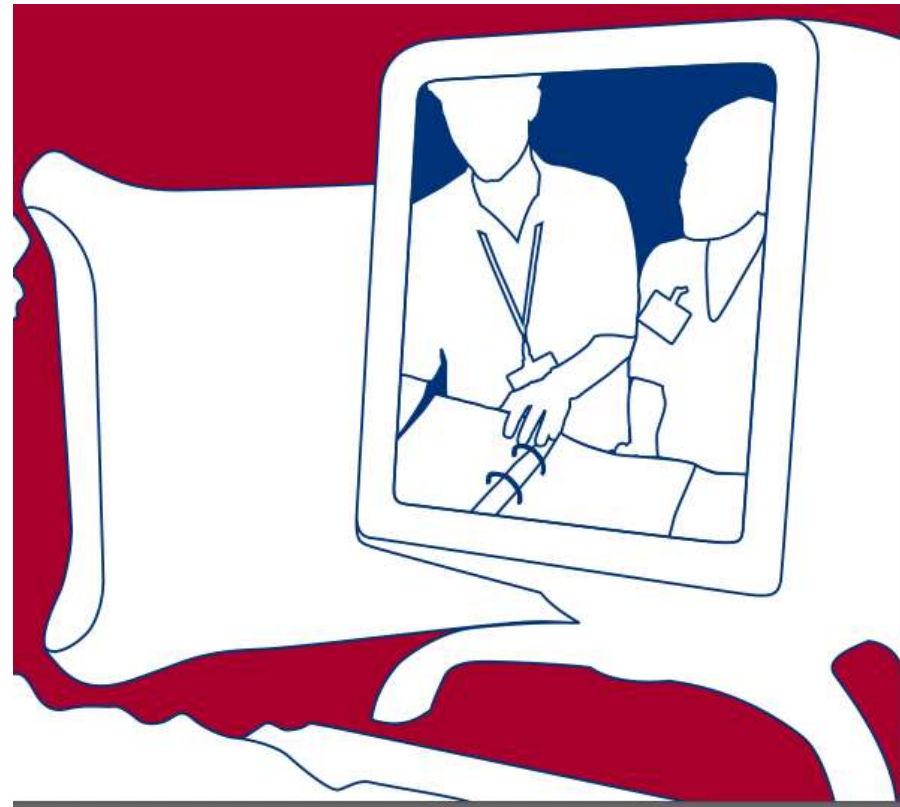
Effectiveness is the extent to which an intervention, when used appropriately, achieves the intended effect. Clinical effectiveness is about the relationship between an intervention and clinical or health outcomes.

Pearson, A., Wiechula, R., Court, A. and Lockwood, C. (2005) The JBI model of evidence-based healthcare. JBI Reports. 3:8, 207- 216

Contemporary Nursing's Most Urgent Evidence Needs



The extent to which the burgeoning nursing research enterprise truly addresses these urgent evidence needs of nurses



The fundamentals of care:

“are universal activities essential for life, part of our daily self-care activities and, as such, are often relegated to the unconscious or common sense level of knowledge. Few adults can remember when they learnt to control their elimination or defecation, respond to hunger and thirst or to understand the basic principles of personal hygiene, exercise and diet. But when confronted with any kind of health or lifestyle challenge, then such tacit knowledge/activity is often the first to be compromised and suddenly, very important.”

Kitson, A., Conroy, T., Wengstrom, Y., Profetto-McGrath, J., Robertson-Malt, S. (2010)
Defining the Fundamentals of Care: Developing a stronger evidence base for nursing practice. In Press

The Proper Study of the Nurse

- The role of the nurse, Patient anxiety on admission to hospital;
- Nurse - I want my mummy;
- Information - a prescription against pain;
- The teaching and practice of surgical dressings;
- The nutritional nursing care of unconscious patients in general hospitals;
- Nursing communication in hospital wards;
- Measures of anxiety in hospital patients;
- Discharged from hospital;
- Nursing care in relation to pre-operative fasting;
- The unpopular patient; and
- Bowel function in hospital patients.

- patient hygiene:
 - one report based on findings from three National Nursing Home Surveys conducted by the Centers for Disease Control and Prevention's National Center for Health statistics;
 - one randomised controlled trial involving seventy-three nursing home residents; and
 - numerous articles based on expert opinion.
- assisted feeding for people with dysphasia: three articles based on expert opinion;
 - two observational studies;
 - one prospective cross sectional study involving one hundred and eleven participants; and
 - one retrospective cross sectional study involving sixty one participants

- mouth toilet for patients receiving chemo- or radio- therapy:
 - one high quality systematic review of forty-two randomised controlled trials (RCTs) with 3855 participants; and
 - another high quality systematic review of twenty-six RCTs involving 1353 participants.

...reasonable to conclude that

...nursing researchers, despite the early focus on the fundamentals of care in the 1970s, appear to have focused on studying phenomena other than those that one associates with the fundamentals of care.

The potential impact of spearheading leading-edge *nursing* research on improving global health



“...rarely do we hear of journalists talking of nursing at all, let alone in terms which suggest that the thin line between the sacred and the sublime is about to be crossed by nursing science. Such revelations are the stuff of Spielberg rather than nursing’s version of ‘science’, which is more concerned with sacral sores than technological gimmickry and awesome inventions.”

