

## Get involved

If you want to take the nursing agenda forward, are ready to speak up for the diverse voice of nursing and really make a difference to the RCN, then why not apply to join a committee or stand for election to Council?

The RCN often looks for members with specific skills to join task and finish groups (which work on set projects) or forum steering committees as well.

In return for your commitment, as a committee or group member you will be able to expand your skills, knowledge and experience, adding to your personal and professional development.

Visit [www.rcn.org.uk/elections](http://www.rcn.org.uk/elections) and [www.rcn.org.uk/appointments](http://www.rcn.org.uk/appointments) to see current vacancies and how to apply.

### More information

More details about the committees can be found on the “about us” section of the RCN website – [www.rcn.org.uk](http://www.rcn.org.uk) – including who sits on the committees, contact details and minutes of meetings.

If you have any questions, please email [governance.support@rcn.org.uk](mailto:governance.support@rcn.org.uk)

[www.rcn.org.uk](http://www.rcn.org.uk)

RCN Headquarters  
20 Cavendish Square  
London W1G 0RN

Publication code 003 886



# Linking together

A guide to RCN Council, committees and groups

There are many committees and groups in the RCN governance structure, but what do they do? This is a guide to their roles and how they work together to ensure the RCN meets its objectives and is run properly for members, and to develop policy.

## RCN Council

RCN Council is responsible for the overall governance of the RCN and ensures it meets its statutory purposes. It sets the strategic direction of the organisation and has ultimate responsibility for its long term financial sustainability.

There are 29 members of RCN Council, with two members each from Scotland, Wales, Northern Ireland and from each of the nine English regions. They are directly elected by members in their country or region. RCN Council also includes the President and Deputy President, the chair of RCN Congress and two student members.

## Council committees

There are two Council committees which assist Council with policy development, covering the trade union and professional sides of the college. Both committees are made up of Council members.

### RCN Membership and Representation Committee (MRC)

This committee supports, oversees and takes decisions on behalf of Council on matters affecting the RCN membership and their representation. This includes pay, terms and conditions, health and safety, and workforce planning.

### RCN Nursing Practice and Policy Committee (NPPC)

This committee supports, oversees and takes decisions on behalf of Council in relation to professional nursing issues and health policy. This includes promoting best practice and influencing the health and social care agenda.

## Council sub-committees

There are four governance committees to assist Council with particular responsibilities. Each committee is made up of Council members and external advisers who bring professional expertise.

**RCN Audit Committee**  
This committee reviews the RCN's financial and risk management arrangements, making sure that things are run efficiently, and also making recommendations to Council about the appointment of external auditors.

**RCN Business Committee**  
This committee advises Council on the development of its financial and business strategies.

**RCN Remuneration Committee**  
This committee advises Council on the pay and other terms and conditions for RCN staff, as well as agreeing the remuneration of the RCN Chief Executive & General Secretary.

**RCN Governance Support Committee**  
This committee ensures good governance practice across the organisation, making sure that the RCN's ways of working and governance policies are effective.

## Governance groups

These groups advise MRC and NPPC about the governance of the RCN's representative committees. The membership varies from group to group to meet their individual needs.

**RCN Students Governance Group**  
This group acts as a regulatory mechanism for the RCN Students Committee and ensures that student issues are embraced and promoted by the rest of the organisation and that the work of the RCN Students Committee helps the RCN meet its strategic objectives.

**RCN Trade Union Governance Group**  
This group acts as a regulatory mechanism for the UK committees (the UK Stewards', Learning Reps' and Safety Reps' Committees), making sure that good governance practices are adhered to, that the voice of the UK committees is heard by MRC and Council, and that the work of the committees helps the RCN meet its strategic objectives.

**RCN Forums Governance Group**  
Reporting to NPPC:  
Importance to nursing and midwifery students, promotes activities to help students and influences policy. Members of the committee are elected by RCN student members.

**RCN Research and Development Governance Group**  
This group ensures good governance of all research activity in the RCN, allocating funds and making sure that research is effective and helps the RCN meet its strategic objectives.

## RCN Standards and Accreditation Committee

This committee ensures appropriate governance in respect of quality assurance for RCN publications (e.g. competences produced by forums) and for the endorsement of guidelines and resources published by other organisations. It also quality assures the services accredited by the RCN Accreditation Unit.

**RCN Forum Chairs Committee**  
This committee works together to promote the work of forums (UK-wide groups of RCN members working in a similar nursing specialty) and ensures they work together to inform RCN practice and policy. It is made up of the chair of each forum.

**RCN Students Committee**  
This committee considers issues of importance to nursing and midwifery students, promotes activities to help students and influences policy. Members of the committee are elected by RCN student members.

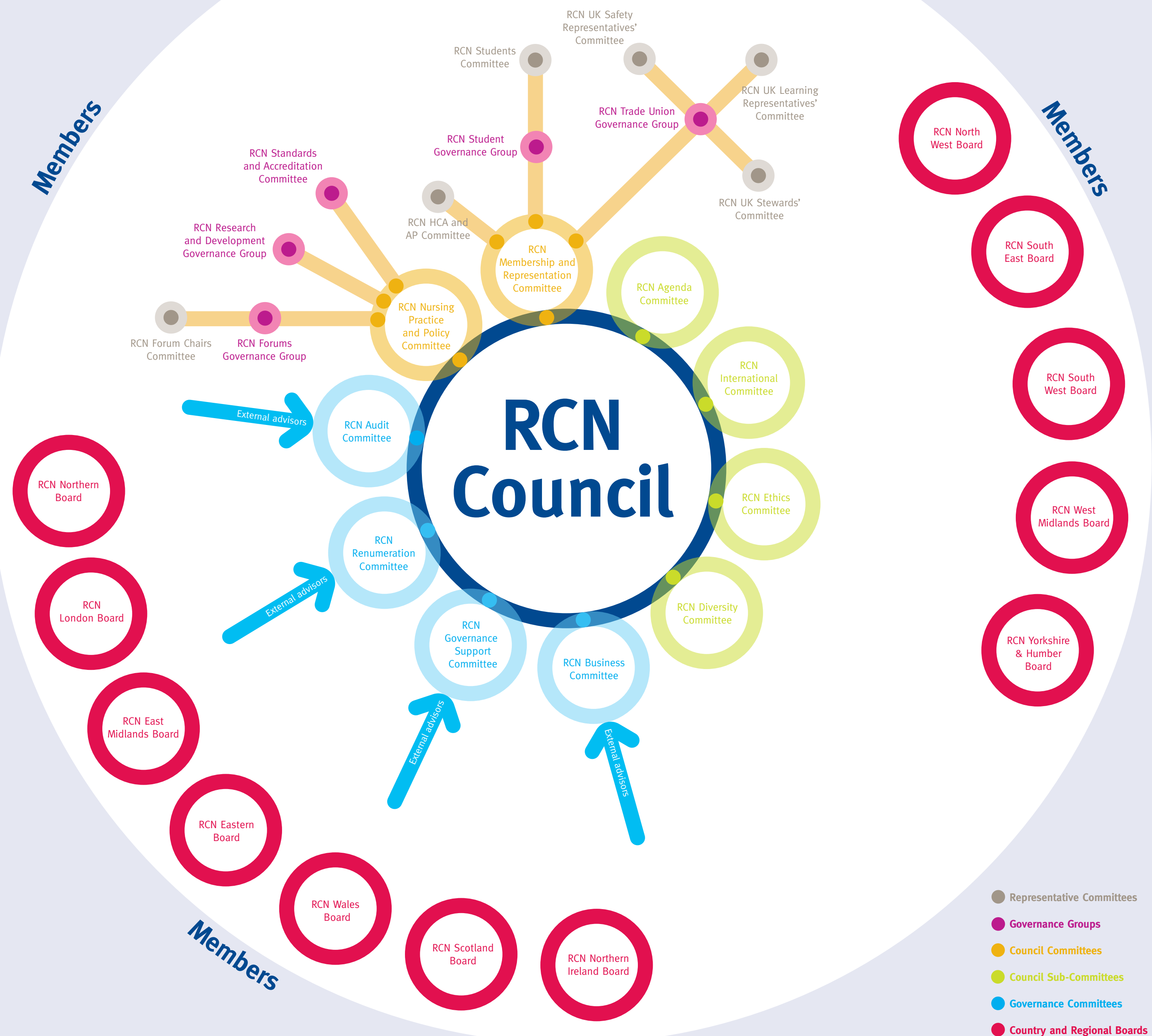
**RCN HCA and AP Committee**  
This committee considers issues of importance to health care assistants (HCAs) and assistant practitioners (APs), promotes their role in the college and influences policy.

**RCN UK Stewards' Committee**  
This committee provides a network for the feedback of information to boards and local stewards, and advises on the RCN's area of practice.

## Country & regional boards

There are three country and nine regional boards to advise and support their directors on matters relating to the country or region. Boards also carry out work delegated to them by Council. Board members are elected to represent the membership of their local area or their area of practice.

# RCN Council, committees and groups



- Representative Committees
- Governance Groups
- Council Committees
- Council Sub-Committees
- Governance Committees
- Country and Regional Boards