

Could You Be a Learning Disability Nurse?



University of
Salford
MANCHESTER

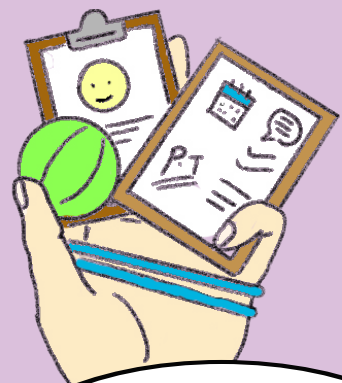
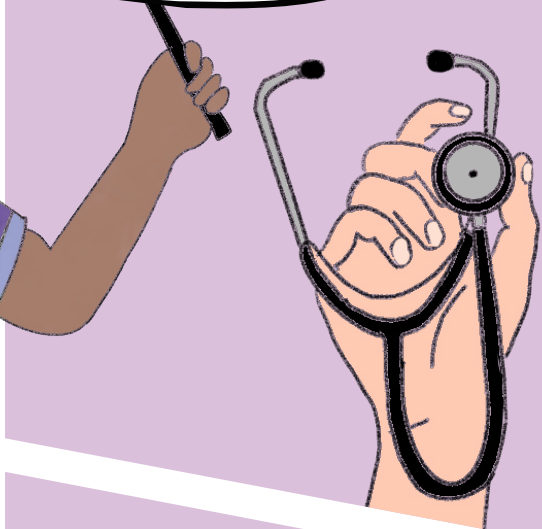
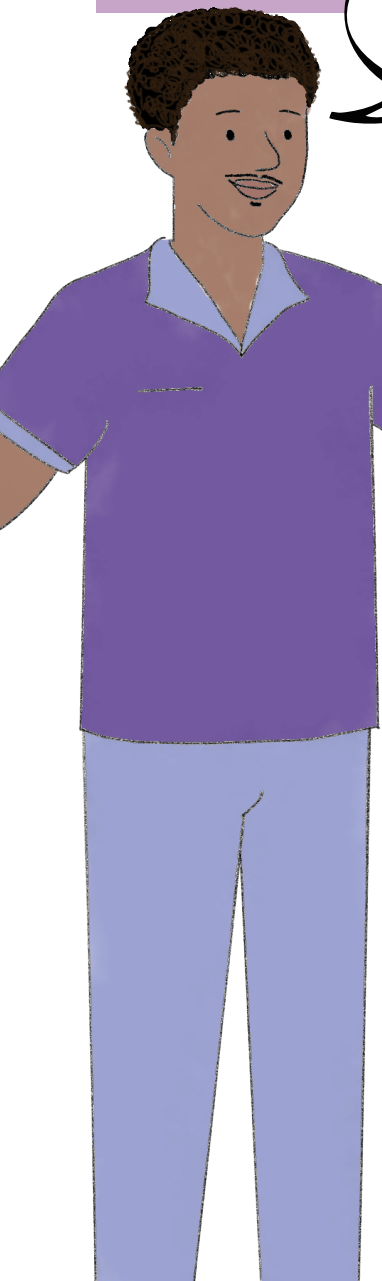




Coordinating Care The "Orchestra Leader"



Think of me as an 'Orchestra Leader.' I don't play every instrument, but I make sure everyone plays in harmony around the person we support.



I'm a physiotherapist and I help Luke who lives with cerebral palsy with his physical movement. Valerie makes sure the rest of the team knows how to support his mobility safely throughout the day.





I'm monitoring James' (who lives with Down syndrome) clinical health, but Steven helps me understand how his medication affects his daily energy and mood.

Now I understand why my GP appointments are so important!

Working With, Not For

Then let's plan that together. My role is to support your choices and independence, ensuring you live your life your way.

I want to be more active in my neighborhood.



Hands-on Clinical Care



Learning disability nurses also work in hospitals to provide direct clinical care. This might include preparing someone for surgery, supporting someone with their PEG feeding, and making sure their communication needs are understood and supported.





Fighting Inequality



Wrapping Up and Next Steps

To find out more, please access

- [Becoming a learning disability nurse:
Royal College of Nursing](#)
- [Learning Disability Nurse Forum:
Learning Disability Consultant Nurse Network](#)
- [Learning disability nursing: National Careers Service](#)
- [Volunteering opportunities: Mencap](#)

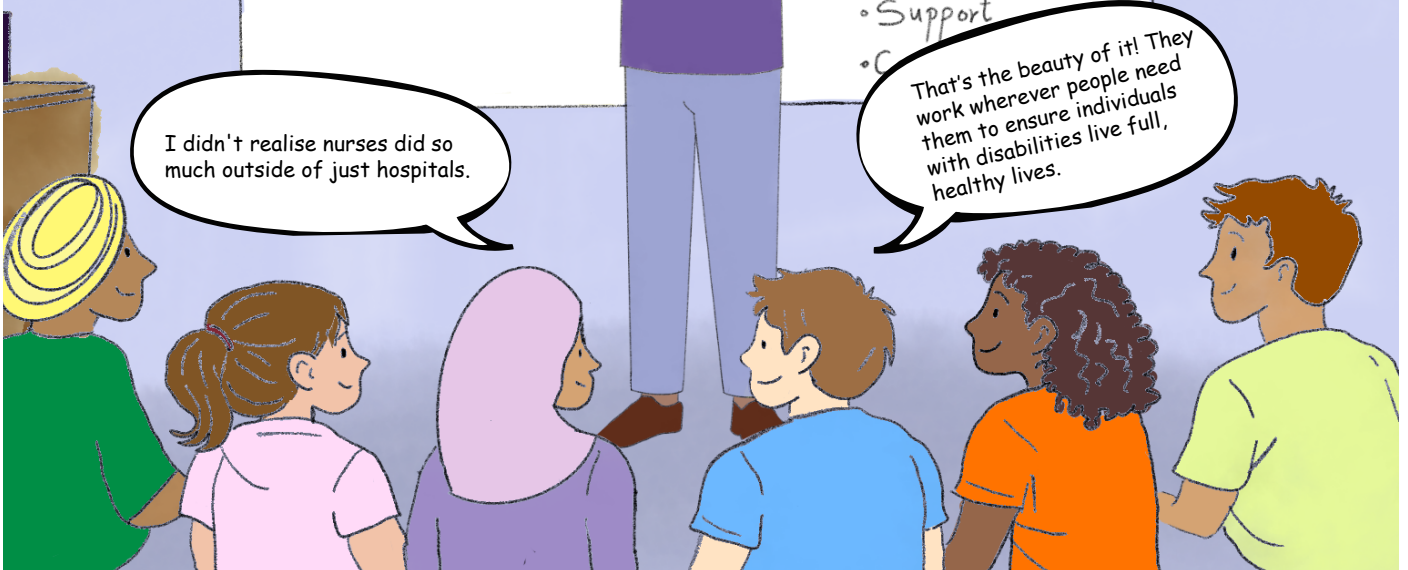
Hopefully from this you can see that Learning Disability nurses work in lots of different areas and make a massive difference to the lives of people with a learning disability.

Learning Disability Nurse

- Inclusivity
- Support
- C

I didn't realise nurses did so much outside of just hospitals.

That's the beauty of it! They work wherever people need them to ensure individuals with disabilities live full, healthy lives.



This comic was produced by the University of Salford based upon research with Learning Disability Nurses and People living with a Learning Disability and their families.

Project Team:
Vanessa Heaslip
Lorna Chesterton
Siobhan Kelly
Dan Redfearn
Aaron Hume
Lorraine Henshaw
Claire Pryor

Illustrated by Noah Maria Joe



University of
Salford
MANCHESTER

