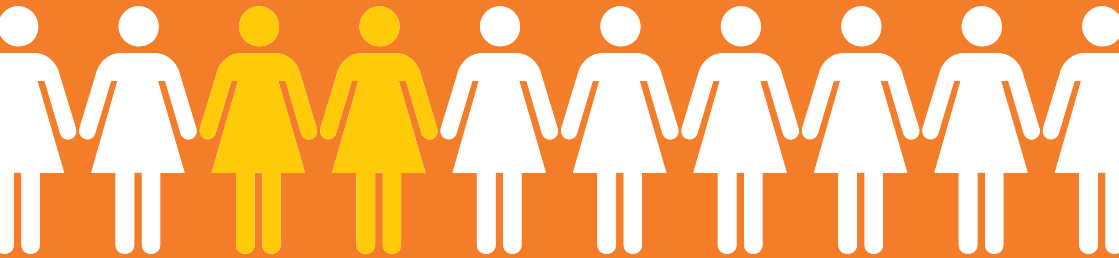


Clinical Nurse Specialist in Early Pregnancy Care



Acknowledgements

The RCN would like to thank the original project team who worked on this publication in 2017. It was reviewed and updated in 2021 by:

Carmel Bagness, RCN Professional Lead Midwifery and Women's Health

Nikki Mills, RCN Project Co-ordinator

Debby Holloway, FRCN

Wendy Norton, FRCN and Associate Professor/Reader, in Health and Social Care, De Montfort University, Leicester

Rachel Small, AEPU Chair of AEPU, Lead Midwife Early Pregnancy and Miscarriage Care, HEFT

Sally Stacy, RCN Women's Health Forum Committee member

Supported by



Publication

This is an education framework/curriculum guidance. An evidence-based consensus document specifying the educational content, intended learning outcomes, approaches to teaching, learning and assessment that are required to prepare nursing staff for a specified area of practice.

Description

This document outlines the key skills and knowledge required to develop the role of a specialist nurse/midwife in early pregnancy care.

Publication date: November 2021

Review date: November 2024.

The Nine Quality Standards

This publication has met the nine quality standards of the quality framework for RCN professional publications. For more information, or to request further details on how the nine quality standards have been met in relation to this particular professional publication, please contact publications.feedback@rcn.org.uk

Evaluation

The authors would value any feedback you have about this publication. Please contact publications.feedback@rcn.org.uk clearly stating which publication you are commenting on.

RCN Legal Disclaimer

This publication contains information, advice and guidance to help members of the RCN. It is intended for use within the UK but readers are advised that practices may vary in each country and outside the UK.

The information in this booklet has been compiled from professional sources, but its accuracy is not guaranteed. Whilst every effort has been made to ensure the RCN provides accurate and expert information and guidance, it is impossible to predict all the circumstances in which it may be used. Accordingly, the RCN shall not be liable to any person or entity with respect to any loss or damage caused or alleged to be caused directly or indirectly by what is contained in or left out of this website information and guidance.

Published by the Royal College of Nursing, 20 Cavendish Square, London, W1G 0RN

© 2021 Royal College of Nursing. All rights reserved. No part of this publication may be reproduced, stored in a retrieval system, or transmitted in any form or by any means electronic, mechanical, photocopying, recording or otherwise, without prior permission of the Publishers. This publication may not be lent, resold, hired out or otherwise disposed of by ways of trade in any form of binding or cover other than that in which it is published, without the prior consent of the Publishers.

Contents

1 Introduction	4
2 The role of the clinical nurse specialist (CNS)	9
3 Clinical nurse specialist in early pregnancy care: skills and knowledge	11
3.1 Clinical practice skills	11
3.2 Leadership skills	12
3.3 Data collection and management	13
3.4 Service provision/pathway management/co-ordination	13
3.5 Education and training delivery	14
3.6 Early pregnancy care profile development	14
3.7 Continuing professional development	15
4 Conclusion	17
5 References	18
6 Useful resources	19



1 Introduction

Early pregnancy care (EPC) is conducted predominately in the first trimester of pregnancy, however service provision may extend to when a woman is 24 weeks pregnant. NICE (2019) focuses its standard specifically on the first trimester (Figure 1.1) (usually defined from the first day of the last menstrual period until the end of the 13th week of pregnancy). However, care may be required at any stage and this should be carried out in collaboration with local maternity services.

Early pregnancy care is a discipline including doctors, specialist nurses, sonographers, midwives, general practitioners, health visitors as well as support staff, and should be conducted in a dedicated early assessment unit and available to all women (NICE, 2019). This expectation was further reiterated by the National Service Framework (NSF 2014/16) recommending that early pregnancy units should be easily accessible in local hospitals with appropriately trained health care professionals, ultrasound and laboratory facilities.

Figure 1.1: NICE (2019) outlines key issues for quality care

The NICE pathway covers the diagnosis and initial management of ectopic pregnancy and miscarriage in women in their first trimester (up to 13 completed weeks of pregnancy).

Quality statement 1: Women referred to early pregnancy assessment services are seen by the service at least within 24 hours of referral.

Quality statement 2: Women who are referred with suspected ectopic pregnancy or miscarriage are offered a transvaginal ultrasound scan to identify the location and viability of the pregnancy.

Quality statement 3: Women with a suspected miscarriage who have had an initial transvaginal ultrasound scan are offered a second assessment to confirm the diagnosis.

(NICE, 2019)

Related NICE standards include:

Multiple pregnancy. NICE quality standard 46 (2019)

Antenatal care. NICE quality standard 22 (2016)





The role of the clinical nurse specialist (CNS) in early pregnancy care is intended to enhance the care for women (and their partners) who may be concerned in early pregnancy. This is mainly around support for pregnancy loss (**Figure 1.2**), however it will also include support for other complications of pregnancy such as hyperemesis gravidarum which is an extreme form of early morning/pregnancy sickness, usually diagnosed by severe nausea and vomiting leading to weight loss and dehydration.

Although the main focus is on supporting women experiencing pregnancy loss the clinical nurse specialist in EPC may also be engaged collaboratively in supporting women who are, and remain, pregnant.

This document outlines the key skills and knowledge required to develop the role of this specialist nurse/midwife and should provide clear direction for commissioners and managers when creating roles to support best practice in local service provision for women and their families.

The primary emphasis for safe, effective compassionate care includes offering treatment choices (and support where treatment is not an option). This is usually conducted in a hospital environment, ideally an early pregnancy unit (EPU), which is prepared and equipped to provide early pregnancy care. This may include an ultrasound scan to confirm the location and viability of a pregnancy and provide a management plan for women diagnosed with miscarriage or ectopic pregnancy. These units should have access to specialist nurses, midwives, sonographers, doctors and other relevant health professionals.

A registered nurse or midwife specialising in early pregnancy care is ideally placed to provide the best care at this challenging time. The CNS is the expert practitioner, providing leadership, whilst improving access to relevant services such as ultrasound, and supporting women who are having or have had a miscarriage, ectopic or molar pregnancy (**see Figure 1.2**).



Figure 1.2: Types of pregnancy loss and key facts

Miscarriage is the spontaneous loss of a pregnancy before 24 weeks gestation. It may only happen once, whereas some women may suffer recurrent miscarriages.

An ectopic pregnancy is one that develops outside of the womb/uterus (the word ectopic means 'out of place'). Around one in 80 pregnancies is ectopic and for some women, it can be life threatening, identified as a leading cause of death in the first trimester of pregnancy.

A molar pregnancy (also called a hydatidiform mole) is one where an abnormal fertilised egg implants in the uterus. The cells that should become the placenta grow far too quickly and take over the space where the embryo would normally develop. The consequences of a molar pregnancy may lead to *persistent trophoblastic disease* and the possible need for chemotherapy (Miscarriage Association, 2017).

Pregnancy of unknown location (PUL) occurs when a woman has a positive pregnancy test, however there is no evidence of an intrauterine or extra-uterine pregnancy or retained products of conception on trans-vaginal ultrasound examination.



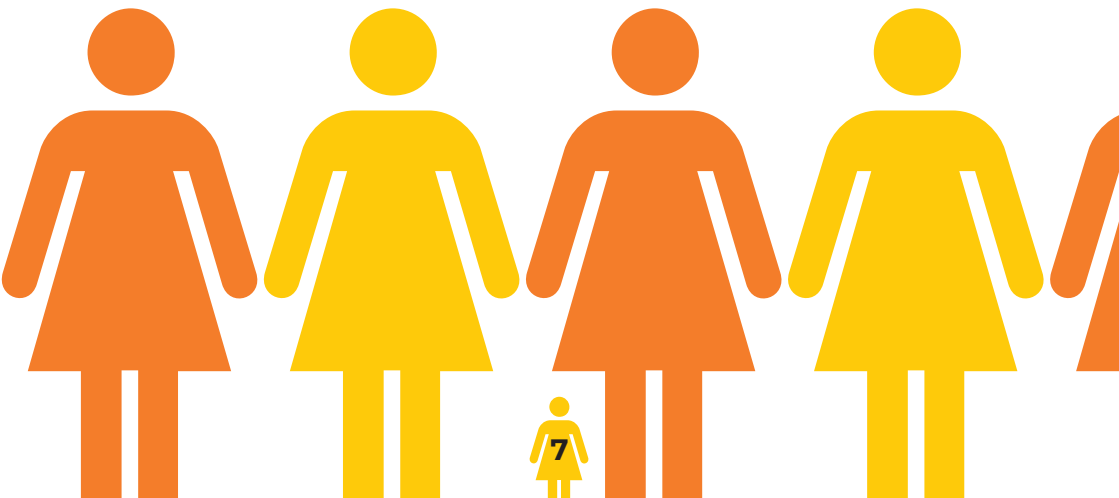
Key facts include:

- 50% of pregnant women will have some vaginal bleeding in the first 12 weeks of pregnancy
- 75% of these women will carry on with their pregnancy
- one in four pregnancies in the first trimester will miscarry
- 11 in 1,000 pregnancies end in an ectopic pregnancy with a maternal mortality of 0.2 per 1,000 estimated ectopic pregnancies (NICE, 2019)
- one in 600 are molar pregnancies
- one in 100 pregnancies in the second trimester miscarry
- one in 100 women have recurrent miscarriage.

(AEPU and Miscarriage Association, 2017)

In 2021, the RCN published guidance on *Advanced Level Nursing Practice and Care of Pregnant and Postnatal Women* (RCN, 2021a) which provides principles of good practice to clarify the role and care for pregnant and postnatal women. It confirms the need to have clear multidisciplinary pathways of care to support best practice between nurses and midwives, between EPC and maternity care.

The RCN recognises that the UK has a gender diverse society and that this standard may be used by and/or applied to people who identify as non-binary or transgender.



Defining the breadth and depth of the clinical nurse specialist role will enhance career opportunities for nurses seeking to develop their skills to become a CNS. It is envisaged that master's level academic learning is expected as these registrants will be responsible for understanding the full care pathways for women who are experiencing early pregnancy complications.

Their leadership skills will also be employed in building strong working relationships with other local units, improving care pathways through emergency care, gynaecology and obstetric care, including midwifery services, general practice services and health visitor care. Their expertise will also facilitate access to related services such as fertility services and/or sexual and reproductive health services, social care support and mental health services.

The nurse specialist will be responsible for increasing awareness and knowledge across the services on contemporary information about early pregnancy care.

To maintain their own competence and confidence to practice they will be expected to conduct regular audits based on women's (and their partners) feedback, and involving local support groups in the defined care pathways.

The NICE (2019) quality standard confirmed that commissioners should ensure there is a timely referral to early pregnancy units, and they should commission the early pregnancy units to provide diagnostic assessments and appropriate management for women with a suspected ectopic pregnancy or miscarriage. A key role for the CNS is to be aware of the landscape around commissioning and who they need to refer to, to ensure services are provided to meet the needs of the women in their care.

Recognising the lack of a national standard to define this role, in 2017, the RCN, in collaboration with the Association of Early Pregnancy Units (AEPU), initiated a project to devise a framework that would inform and enhance local practice and establish a baseline standard for defining the role of CNS across early pregnancy care services across the UK.



2 The role of the clinical nurse specialist

The role of the CNS in managing and supporting women in early pregnancy care was defined to take account of the need to:

- lead and develop services
- ensure these acute services are well linked with primary care
- support a better understanding among all health care professionals who come in contact with women (and their partners/families)
- develop and maintain positive working relationships with other health care professionals especially general practice services (general practitioners and practice nurses), midwives and obstetricians
- provide clinical supervision for others, presenting case studies and learning from practice.

To become a CNS in EPC, registrants will:

- have extensive experience working within a gynaecology or women's health setting
- have been educated to/ working towards masters level academic study and display masters level thinking and decision making
- have insight into the conditions that may impact on early

pregnancy development and all of the areas of management, including the wider social political dimensions of pregnancy care.

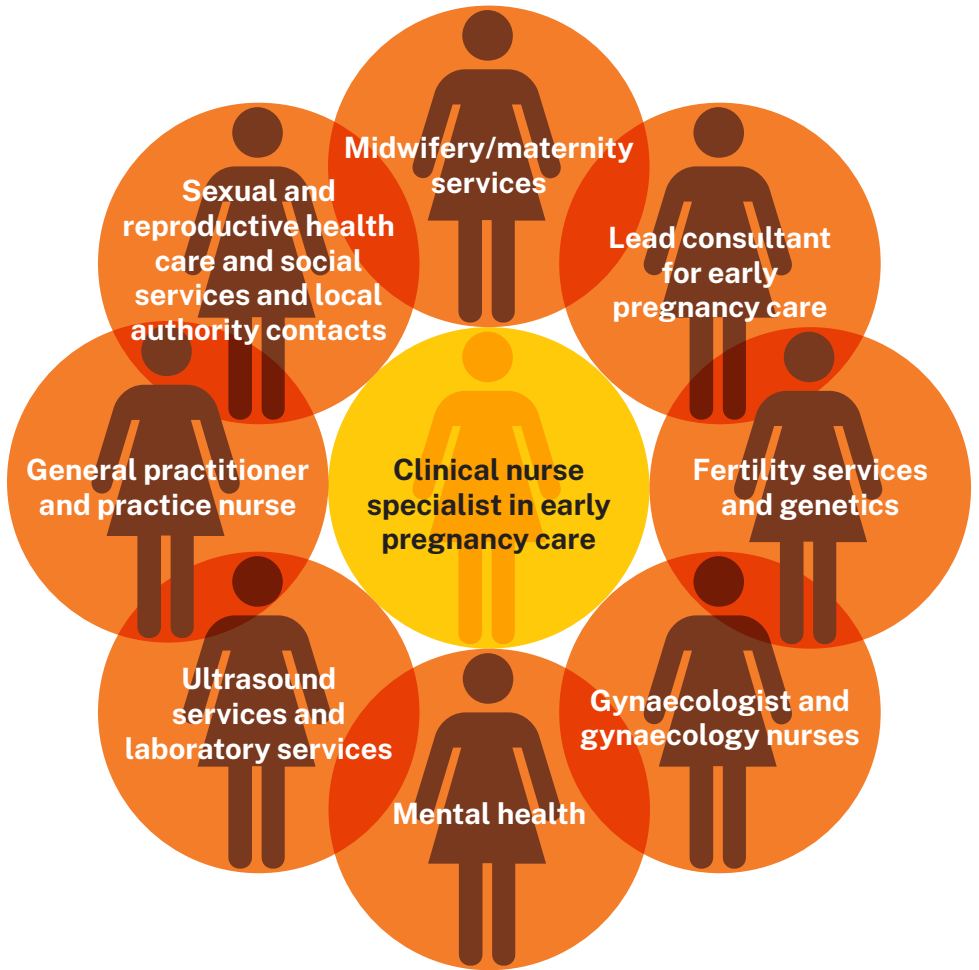
The majority of the work will be looking after women who have early pregnancy complications including:

- vaginal bleeding
- abdominal pain
- infection
- hyperemesis
- miscarriage
- ectopic pregnancy
- molar pregnancy
- non-pregnant pathology such as cysts and fibroids
- complications that may occur after a termination of pregnancy
- social concerns and vulnerabilities (eg, domestic abuse, teenage pregnancy, drug dependency, poverty).

The primary aim of an early pregnancy service is to provide safe, effective, excellent woman-centred care by clearly defining and explaining the extent of presenting symptoms, and providing the continuity of carer and care, whilst working collaboratively in a multi-disciplinary team (**Figure 2.1**).



Figure 2.1: Multi-professional engagement



3 CNS in early pregnancy care role: skills and knowledge

The role of the CNS in early pregnancy care is complex and will demand a range of clinical practice skills, alongside management and leadership insightfulness. This senior role will require the nurse to be able to:

- provide excellent nursing clinical care, including counselling and psychological support
- be an inspiration and source of knowledge for others
- take account of the woman's fertility needs and aspirations
- use evaluation of practice and audit tools
- enhance their own and others education
- consider the need for research to further enhance practice.

It is recognised that this is a developing role and that not all nurses will come with the full skills set required to fulfil all components outlined below.

3.1 Clinical practice skills

- Have an expert knowledge of early pregnancy, management options (including associated side effects and evidence based use of complementary therapies) and be able to sign post to other services or support groups).
- Be able to communicate with women and health care professionals at all levels, in both primary and secondary care; demonstrate excellence in written, verbal and telephone skills, including documentation.
- Provide telephone and online triage for clinical decision making conversations.
- Provide compassionate care to pregnant women, including breaking bad news effectively and providing emotional support.
- Empower women to make the right choices for them as individuals.
- Be able to undertake informed consent and provide management planning advice.



- Be able to undertake consultations independently, including assessment, history taking, physical and psychological assessment and transvaginal ultrasound.
- Be competent in the use of and interpreting diagnostic skills such as speculum examination (including to remove pregnancy tissue from the cervix), venepuncture, and cannulation.
- Undertake ultrasound and interpret results (**see 3.3 on page 13**).
- Facilitate nurse-led clinics, face-to-face and telephone and online services.
- Be a non-medical prescriber or work within patient group directives (PGDs) and have knowledge of drug regimes and side effects, including complementary therapies.
- Demonstrate empathy and compassion, whilst also undertaking counselling or be able to refer to the appropriate services.
- Undertake referrals both to other professionals and local support groups.
- Ensure the woman has contact details for the CNS and can make contact if problems develop or issues need clarifying.
- To create and evaluate clinical management plans for individuals.

3.2 Leadership skills

- Be the woman's advocate.
- Have the ability to work independently as an autonomous practitioner, as well as part of the multidisciplinary team and be organised in the practice environment.
- Be actively engaged in service development, commissioning and provision of complex care pathways.
- Be aware of the value and costing of the service by looking at the impact of the CNS on service users; for example, by user satisfaction ratings, number of consultations, number of women seen and number contacted, audit appointment cancellations and audit pathways in conjunction with management teams.

3.3 Ultrasound skills

- Have undertaken a CASE (Consortium of Accredited Sonographic Education) programme of training for ultrasound in early pregnancy or similar.
- Perform ultrasound scans in accordance with safety guidance and recognise guidelines such as those produced by NICE to contemporary practice.
- Communicate findings effectively to the woman (and her partner).
- Produce a clinically accurate and useful report that will enhance overall care.
- Have responsibility for training medical and non-medical personnel in ultrasound.
- Maintain professional development within this specialised area.

The CNS should also be aware of their scope of practice, in particular with regards to gynaecological ultrasound, recognising and reporting deviation from the norm, beyond those related to pregnancy.

3.4 Data collection and management

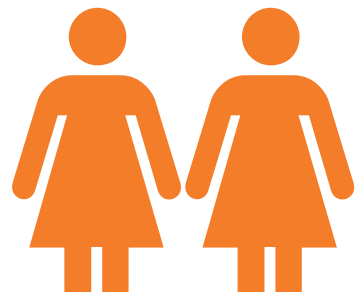
- The collection and analysis of data to demonstrate service effectiveness and to create own centre audit and research data.
- Service evaluation, including womens' views (and their partners) on the service.
- Inform research and use research in practice.
- Assess individual women at each step of the pathway and use this data to inform the medical team/consultant of a woman's progress/ follow-up needs.
- Information technology skills should incorporate use of databases, protocols, literature searching, audit, questions, research, word processing and spreadsheets (such as Microsoft's Word, Teams and Excel packages), as well as an awareness of the impact of social media on women's knowledge and/or expectations.

3.5 Service provision/pathway management/co-ordination

- Teamwork, including working with the multidisciplinary team to co-ordinate the care in outpatient clinics, during interventions and with other specialties.
- Ensure a streamlined service in all areas of care.
- Be the central point of contact for women.
- Co-ordinate services, eg, appointments and referrals to other services.
- Liaise with support groups and related disciplines such as AEPU.
- Design and the monitoring of care pathways.
- Engage with local service commissioners.
- Work with quality monitoring systems such as the Care Quality Commission.

3.6 Early pregnancy care profile development

- To raise awareness with women, within primary and acute care and to work with support groups to highlight the needs of women (and their partners) when confronted with an early pregnancy complication.
- Understand the local and political landscape where care is set.
- Understand local service providers' priorities to ensure active engagement in primary and secondary care commissioning and provision.
- Spark interest and engage with others about early pregnancy care.
- Conduct audits and consider research opportunities to enhance practice.
- Responsible for mentoring and developing junior health care professionals in understanding the needs of women in early pregnancy care.



3.7 Continuing professional development

The level of education needed for the role is at master's level, with evidence of master's level thinking and problem solving.

This could include:

- consultation skills
- communication skills module (breaking bad news, etc.)
- non-medical prescribing
- presentation skills
- early pregnancy care module
- evidenced-based practice
- advanced nursing practice
- counselling
- ultrasound
- leadership
- sexual health and contraception
- advanced physical assessment skills
- political and economic leadership.

They may also wish to consider RCN credentialing to demonstrate their competence at this advanced level of practice (RCN, 2021b).

- Manage effective support for self supervision, mentoring/ buddying, using other CNS and the AEPU network.
- Maintain up-to-date NMC registration.
- It is recommended that the CNS in early pregnancy care becomes a member of the AEPU to extend good practice skills, and they attend a relevant national conference at least once every two years.
- It is also recommended that all CNS in early pregnancy care should develop skills to perform safe manual vacuum aspiration.

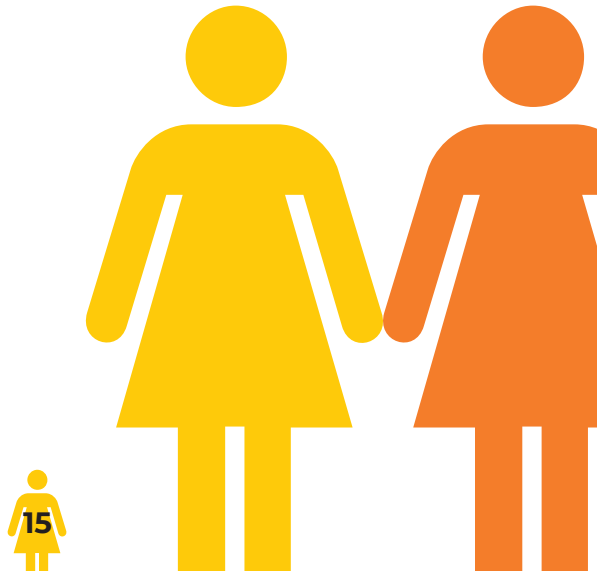


Figure 3.1: Overview of a clinical nurse specialist in early pregnancy care



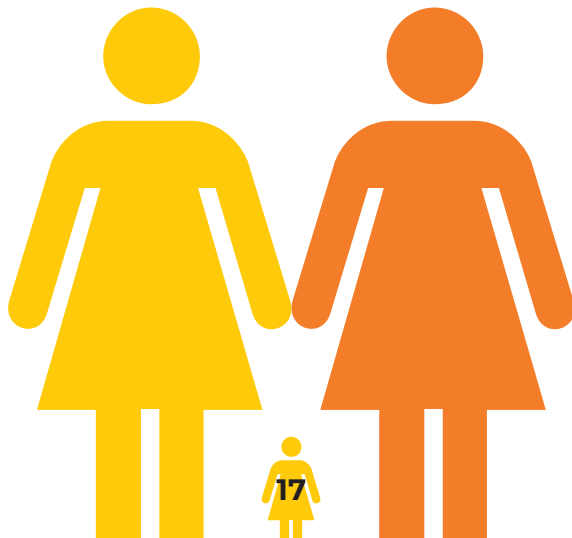
4 Conclusion

The clinical nurse specialist in early pregnancy care is a key role within the early pregnancy care team and the opportunity represents an exciting career option for nurses to develop into a leadership role in a collaborative environment.

It is a strategic pathway for nurses who specialise in an important aspect of woman's health care, which can be under resourced and poorly understood, requiring leadership and political astuteness to ensure the role is expanded to meet the needs of women who suffer early pregnancy complications.

This standard was developed in 2017, and in 2021 it was reviewed, following an impact assessment of its usefulness in fulfilling the overall aim of the original publication. The standard outlined the key skills and knowledge required to develop the role of this specialist nurse/midwife, with an emphasis on providing safe, effective, compassionate care includes offering treatment choices (and support where treatment is not an option). The RCN has also published a report on the findings of the study, which can be found at: [rcn.org.uk/publications](https://www.rcn.org.uk/publications)

This standard is an opportunity where nurses can really make a positive difference to the experience of women and their partners at a vulnerable and potentially very stressful time in their lives. Nurses may not come with a full range of skills but this standard provides a pathway for career enhancement through specialist practice and on to advanced level practice.



5 References and further reading

Department of Health (2013) *NHS Outcomes Framework 2014/15*, London: DH. Available at: www.gov.uk/government/publications/nhs-outcomes-framework-2014-to-2015

Department of Health (2015) *Improving outcomes and supporting transparency: a public health outcomes framework for England 2013–2016*, Part 1 and Part 1A, London: DH. Available at: www.gov.uk/government/publications/healthy-lives-healthy-people-improving-outcomes-and-supporting-transparency

Department of Health (2016) *NHS Outcomes Framework 2016/17*, London: DH. Available at: www.gov.uk/government/publications/nhs-outcomes-framework-2016-to-2017

Department of Health (2021) *NHS Outcomes Framework Indicators*. Available at: www.gov.uk/government/statistics/nhs-outcomes-framework-indicators-february-2021-release

Miscarriage Association (2017) *Types of pregnancy loss*, London: Marriage Association. Available at: www.miscarriageassociation.org.uk/information/types-of-pregnancy-loss

National Institute for Health and Care Excellence (2019) *Ectopic pregnancy and miscarriage: diagnosis and initial management*, London: NICE. Available at: www.nice.org.uk/guidance/ng126

National Institute for Health and Care Excellence (2014) *Ectopic pregnancy and miscarriage*, London: NICE. Available at: <https://pathways.nice.org.uk/pathways/ectopic-pregnancy-and-miscarriage/ectopic-pregnancy-and-miscarriage-overview>

National Institute for Health and Care Excellence (2019) *Quality standard 46, Multiple pregnancy: twin and triplet pregnancies*, London: NICE. Available at: www.nice.org.uk/guidance/qs46

National Institute for Health and Care Excellence (2016) *Quality standard 22, Antenatal care*, London: NICE. Available at: www.nice.org.uk/guidance/qs22

National Institute for Health and Care Excellence (2014) *Quality standard 69, Ectopic pregnancy and miscarriage*, London: NICE. Available at: www.nice.org.uk/guidance/QS69

Prior M, Bagness C, Brewin J, et al., (2017) Priorities for research in miscarriage: a priority setting partnership between people affected by miscarriage and professionals following the James Lind Alliance methodology. *BMJ*. <https://bmjopen.bmj.com/content/7/8/e016571>

RCN (2020) *Genital examination in women: a resource for skills development and assessment*, London: RCN. Available at: www.rcn.org.uk/professional-development/publications/rcn-genital-examination-in-women-pub007961

RCN (2021a) *Advanced Level Nursing Practice and Care of Pregnant and Postnatal Women*, London: RCN. Available at: www.rcn.org.uk/professional-development/publications/rcn-care-of-pregnant-and-postnatal-women-uk-pub-009-756

RCN (2021b) *Recognising advanced level practice in nursing* (web). Available at: www.rcn.org.uk/credentialing

RCN (2021c) *Advanced Practice Standards* [web]. Available at: www.rcn.org.uk/professional-development/advanced-practice-standards

RCN (2021d) *Prescribing in pregnancy* [web]. Available at: www.rcn.org.uk/clinical-topics/medicines-management/prescribing-in-pregnancy

RCN (2021e) *Managing the Disposal of Pregnancy Remains*, London: RCN. Available at: www.rcn.org.uk/professional-development/publications/managing-the-disposal-of-pregnancy-remains-uk-pub-009-942

Royal College of Obstetricians and Gynaecologists (2016) *Diagnosis and management of ectopic pregnancy* (Green-top guidelines no.21), London: RCOG. Available at: www.rcog.org.uk/en/guidelines-research-services/guidelines/gtg21

6 Useful resources

AEPU – The Association of Early Pregnancy Units provides support and resources to support women's choice and maintain standards in early pregnancy care. aepu.org.uk

British Association of Counselling and Psychotherapy (BACP) bacp.co.uk

British Fertility Society (BFS) <https://britishfertilitysociety.org.uk>

British Infertility Counselling Association (BICA) bica.net

European Society of Human Reproduction and Embryology eshre.eu

Miscarriage Association miscarriageassociation.org.uk

The Ectopic Pregnancy Trust ectopic.org.uk

Pregnancy Sickness Support pregnancysicknesssupport.org.uk

Royal College of Nursing rcn.org.uk

Royal College of Obstetricians and Gynaecologists rcog.org.uk

Sands – Stillbirth and neonatal death charity sands.org.uk



Publication code: 009 931

The RCN represents nurses and nursing, promotes excellence in practice and shapes health policies.

November 2021

Review date: November 2024

Published by the
Royal College of Nursing
20 Cavendish Square
London W1G 0RN

RCN Direct **0345 772 6100**

RCN Online **[rcn.org.uk](https://www.rcn.org.uk)**

Supported by

