

NSPCC

**Child Trafficking Advice Centre
(CTAC)**

0808 800 5000

**Beth Hurley – Children's Services
Practitioner**

EVERY CHILDHOOD IS WORTH FIGHTING FOR

CTAC Remit



Service for professionals who have child trafficking concerns

Multi-disciplinary team to prevent, protect children from traffickers and pursue offenders



Staffed by social workers, National Crime Agency and Home Office

We advise and influence professionals from a child protection, immigration and police perspective



We offer a free telephone advice line, leaflets, training and on-going case support to professionals

Report on and analyse trafficking trends

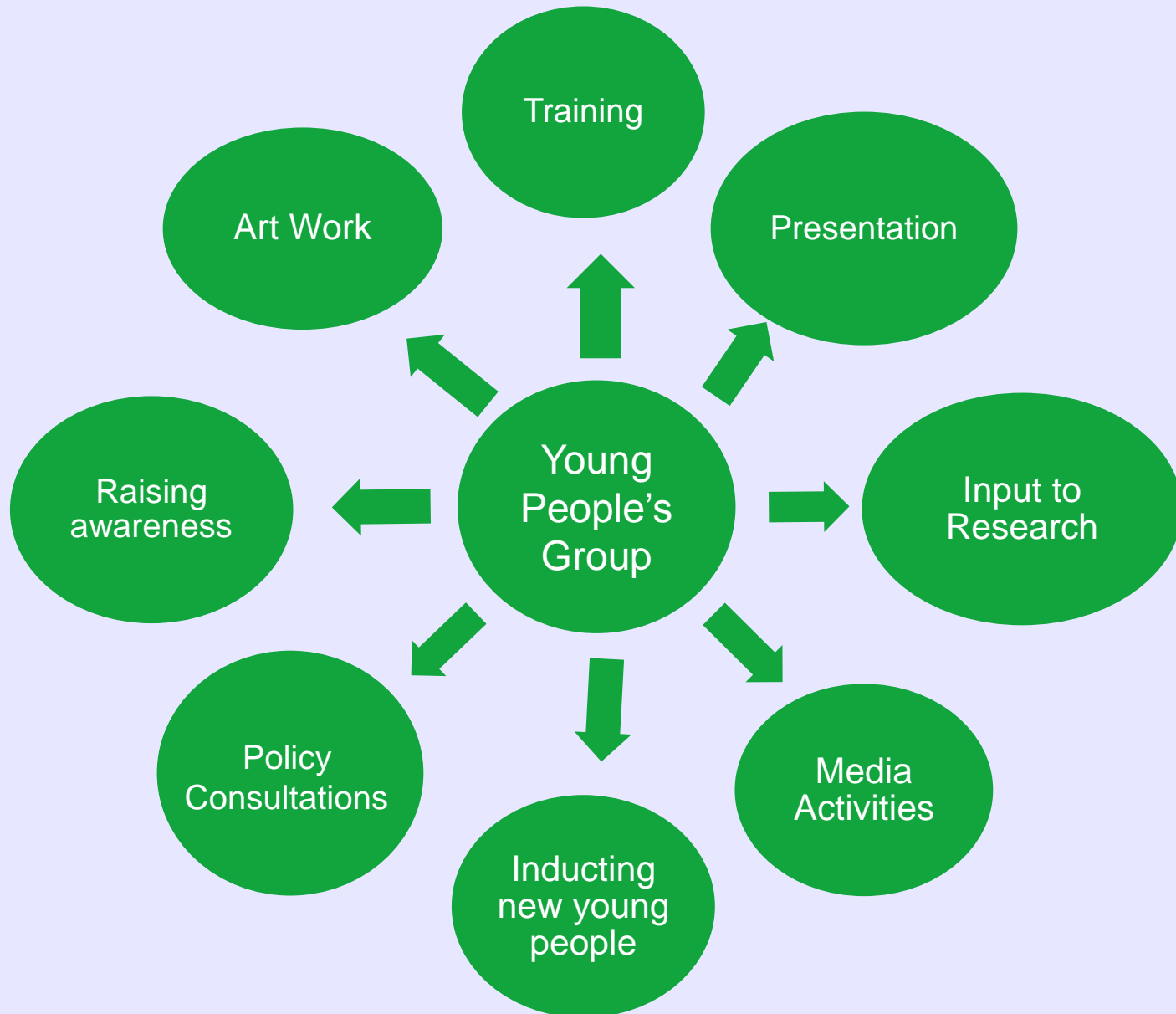


CTAC Team



Social Workers	Immigration officers	National Crime Agency
<ul style="list-style-type: none">• Casework• First Responder for the National Referral Mechanism (NRM)• Coordinate and work in partnership with other agencies.• Raise awareness about child trafficking within the UK and Internationally• Coordinating and facilitating Young People's Group	<ul style="list-style-type: none">• Work with CTAC under UKVI/Border Force section 55 responsibility towards children.• Immigration Enforcement officer (safeguarding lead – completes checks, places flags on borders)• Immigration Investigation officer (identifies intelligence which leads to finding potential traffickers)• Works internationally to share experiences and build international links	<ul style="list-style-type: none">• Links with relevant child protection/trafficking agencies nationally and internationally• Awareness raising and training• Attends child protection conferences/strategic meetings• Leads on migrant missing children• Works internationally to share experiences and build international links

Impact of Young People's Advisory Group



What is child trafficking?

The movement of a child for the purpose of exploitation.

A child cannot give informed consent to being abused.

Child trafficking is child abuse.

What are children trafficked for?

Criminal activity –
cannabis cultivation,
pick pocketing,
shoplifting, begging,
street crimes

Sexual exploitation

Forced marriage

Domestic servitude

Exploitative labour -
nail bars,
restaurants,
factories

Unregistered private
fostering
arrangements for
possible benefit or
immigration fraud

Illegal adoption

Moving drugs

Removal of organs

Legislation



Child Care	Immigration	Criminal
The Children Act 1989	Section 55 of Borders, Citizenship and Immigration Act 2009	England and Wales: Modern Slavery Act 2015
The Children Act 2004	Asylum and Immigration Act 2004 Immigration Act 2014 Immigration Bill 2016	Northern Ireland: Human Trafficking And Exploitation (Criminal Justice And Support For Victims) Act 2015
The Children Order 1995 (Northern Ireland)		Scotland: Human Trafficking and Exploitation Act 2015
Children (Scotland) Act 1995		
United Nations Convention on the Rights of the Child 1989		

What are the Risk Indicators?

Foreign National Child	Brought or moved from another country	Has false documentation/no passport or ID	Separated from carers or those with Parental Responsibility
With an adult, but unclear/concerning relationship	With adult who speaks for the child	Orphaned or separated from family or main carers	Missing
Has unexplained money or goods	Physical symptoms; pregnant, STI's, sexual or physical assault, poor dental health	Emotional health concerns	Often hidden from universal services (school, GP)
An unrelated or new child discovered at an address	Found in brothel or sauna	Involved in criminal activity: cannabis factory, begging, pick pocketing	Exploited in; restaurants, factories, nail bars, cleaning etc.
Caring for children/excessive domestic work			

Risk Indicators: Physical signs

Signs of physical trauma, including old injuries

Sexual assault

Unusual infections such as TB or immunisable diseases

Multiple sexually transmitted infections

Several somatic symptoms arising from stress

Malnutrition, dehydration

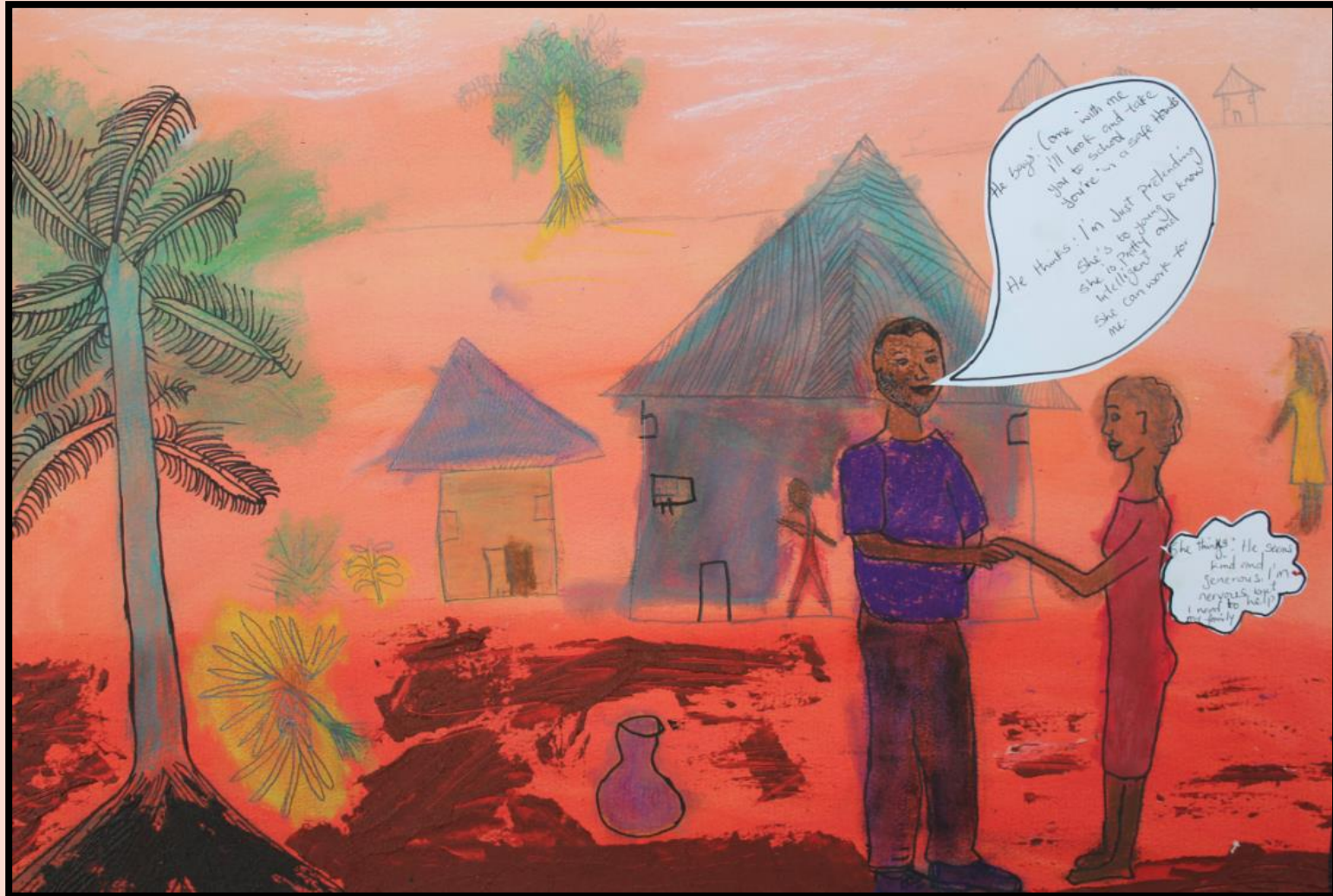
Multiple pregnancies or abortions

Unusual occupational injuries

Branding tattoos or other types of branding (cutting, burning)

Dental injuries

Listen to Me

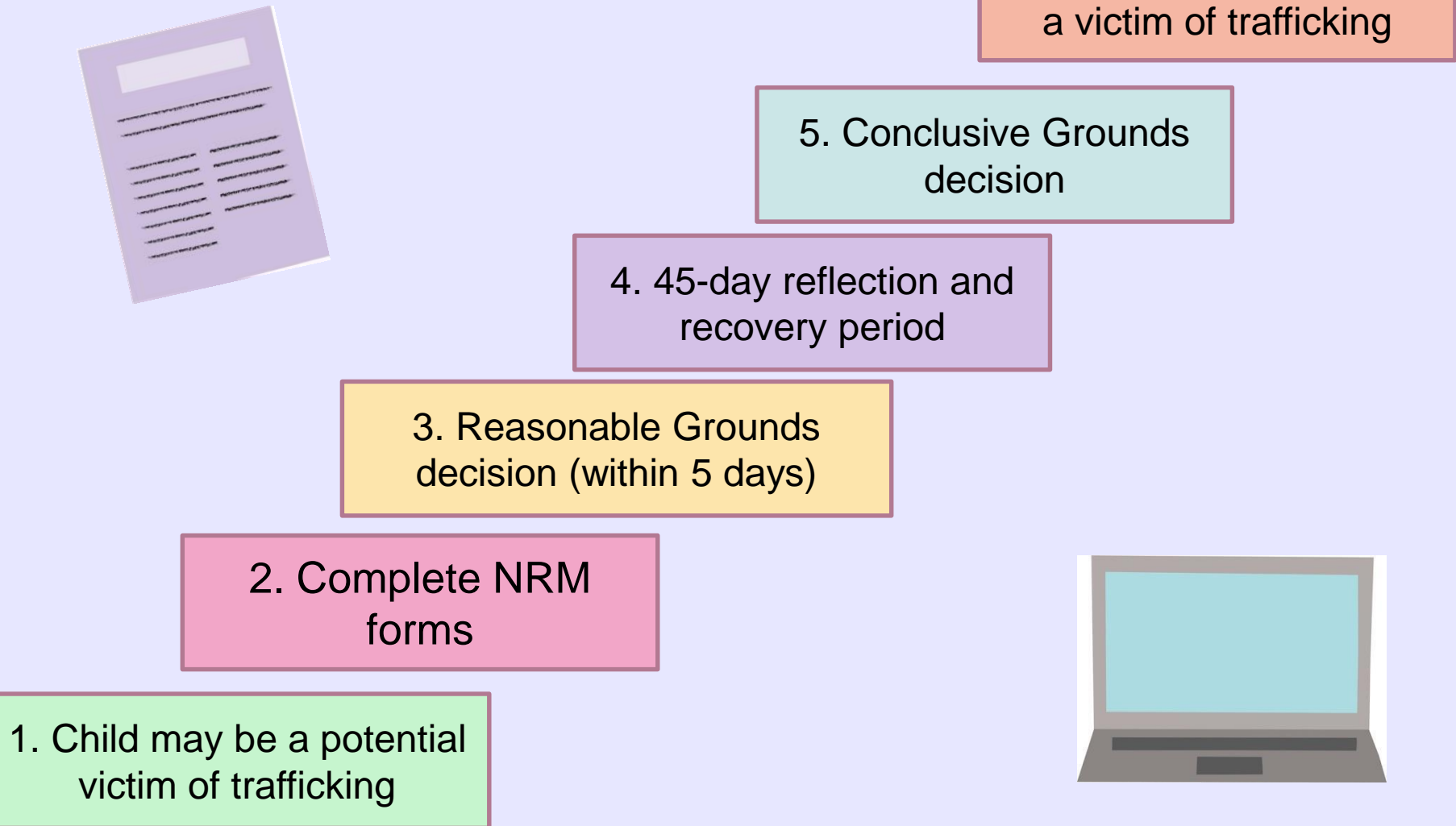


Where to Report....

- Discuss your concern with your Safeguarding Lead/Team
- Report your concerns to the Police & Children's Social Care
- Refer the child/young person to Children's Social Care
- Contact NSPCC [0800 1111](https://www.nspcc.org.uk)



National Referral Mechanism (NRM)



NSPCC Child Trafficking Advice Centre

0808 800 5000



9am-4.30pm Monday to Friday



CTAC@nspcc.org.uk



www.nspcc.org.uk/ctac