

Proxy decision making & dementia care: exploring decision maker thinking using Construal Level Theory: A Novel Approach

Helen Convey¹, Janet Holt¹, Barbara Summers²

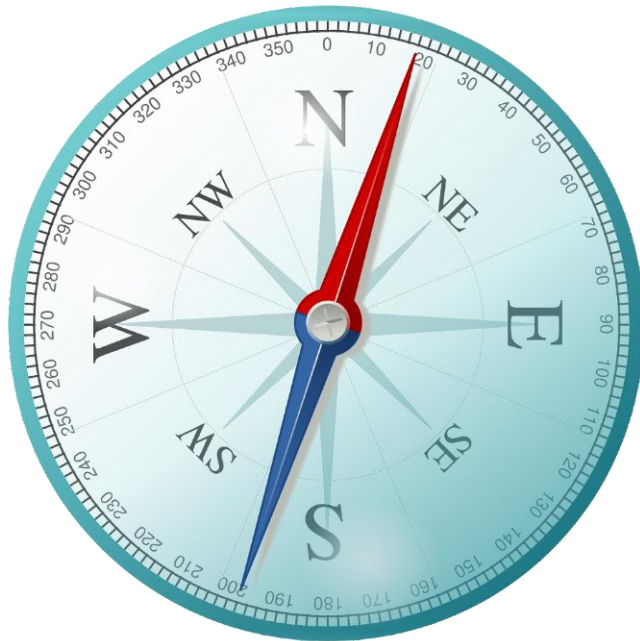
¹School of Healthcare

²Centre for Decision Research,
Leeds University Business School

✉ h.m.convey@leeds.ac.uk

🐦 @HelenConvey @LeedsHealthcare





Presentation Plan

- Dementia & Proxy Decision Making: The Dilemma
- Construal Level Theory (CLT)
- The Linguistic Category Method
- Our Approach
- Initial Findings
- The Next Steps
- References

Dementia & Proxy Decision Making

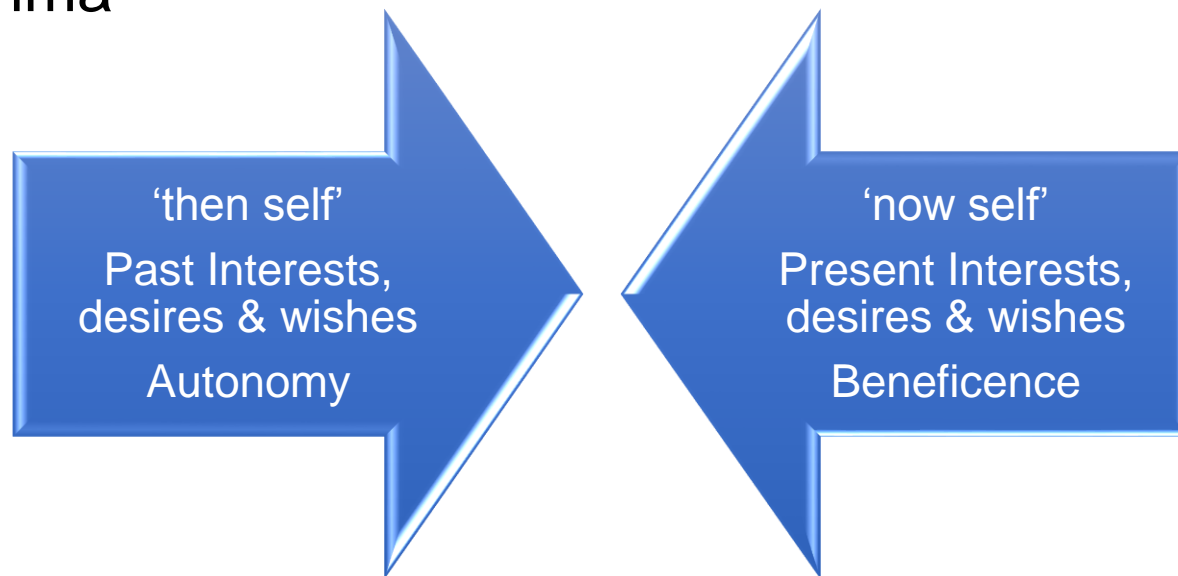


What should Mr N's daughter do?

“Mr N has been a committed vegetarian for most of his adult life. He develops Alzheimer's disease. He lives with his daughter who is not a vegetarian. She provides him with vegetarian food, but it becomes clear that Mr N is raiding her fridge & eating the processed meats & when his daughter catches him eating meat he is doing so with obvious pleasure.”

Hope et al., 2009 p737

The Dilemma



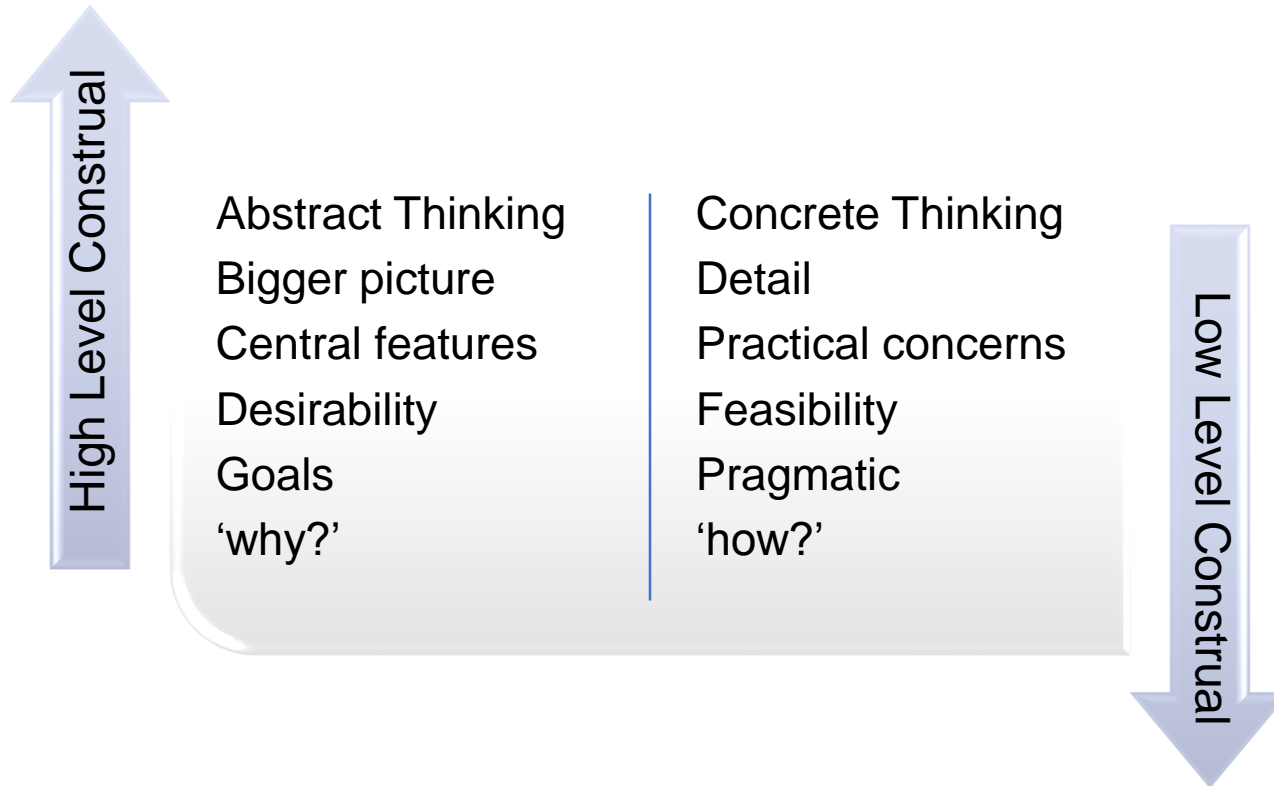
Stonestreet (2014)
Beauchamp & Childress (2013)
Nys (2013)



Construal Level Theory

- Predicating
- Imagining
- Speculating
- Psychological Distance:
 - ↔ Time
 - ↔ Space
 - ↔ Social
 - ↔ Hypothetical

Liberman & Trope, 2014
Trope & Liberman, 2010



The Linguistic Category Method

- Following lines of print
- Gaining knowledge

Reading



- Putting a key in the lock
- Securing the house

Locking a Door



- Removing the meat from his hands
- Respecting past interests

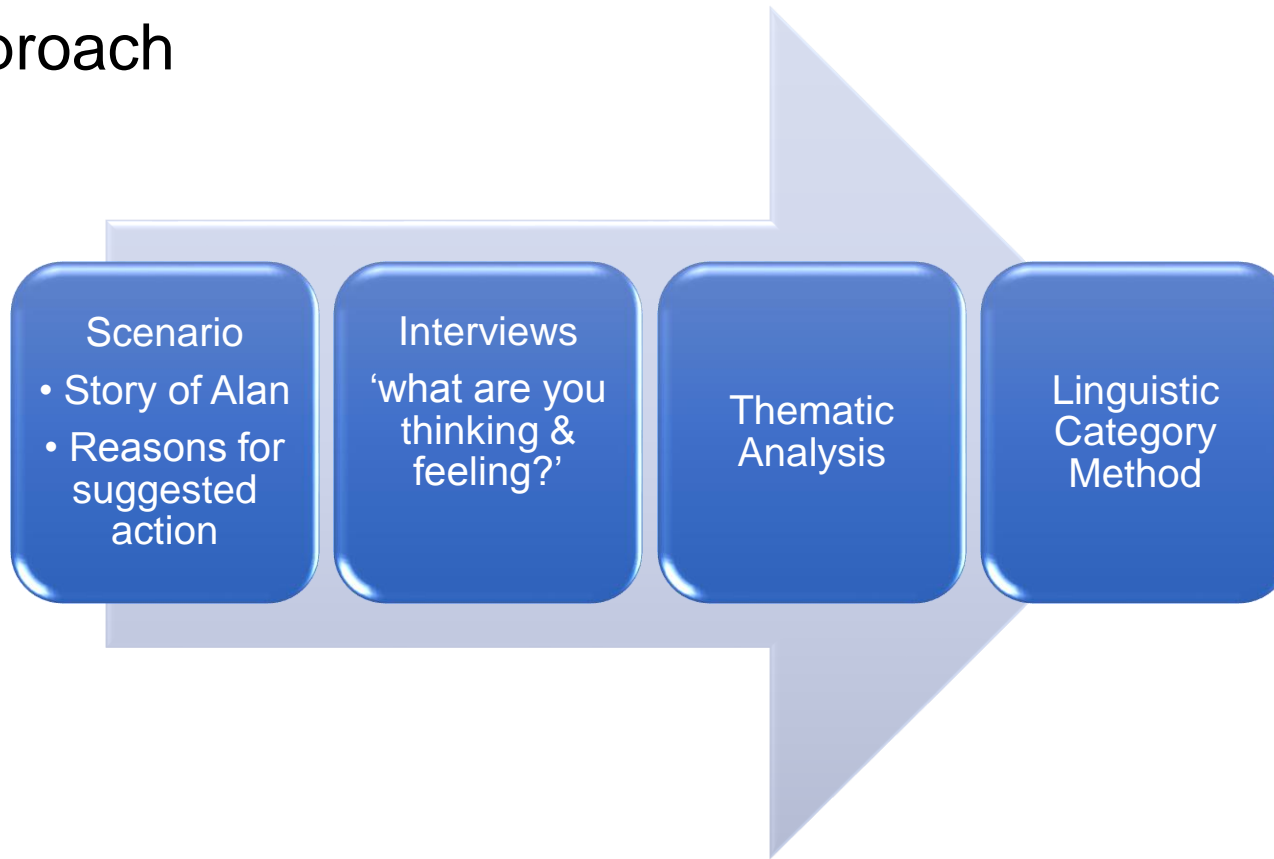
Stopping Mr N



Fujita et al., 2006

Semin & Felder, 1991

Our Approach



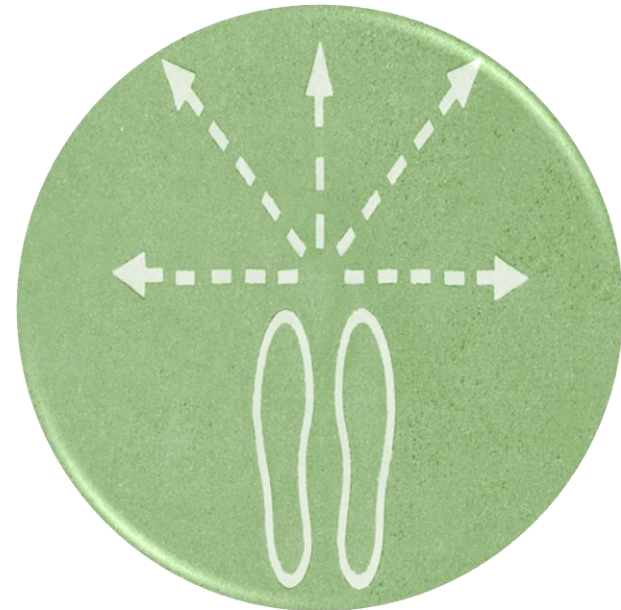
Participants travelled across Psychological Distance



- Try to understand perspective in past & present
- Abstract thoughts establish central values & goals
- Inform the basis for the decision
- Concrete thoughts express pragmatic concerns
- Establish the boundaries for the decision
- Use imagination to seek alternative solutions

The Next Steps

- Practical impact?
- Proxy decisions maker interests vs. interests of the person with dementia
- Might knowing about abstract & concrete thinking help?
- Can we enable decision makers to recognise this way of thinking & to maximise it?
- Does this assist nurses in giving support?



References

Beauchamp, T.L. and Childress, J.F. 2013. *Principles of Biomedical Ethics*. 7th ed. New York, Oxford University Press.

Fujita, K., Henderson, M.D., Eng, J., Trope, Y. and Liberman, N. 2006. Spatial Distance and Mental Construal of Social Events. *Psychological Science (Wiley-Blackwell)*. **17**(4), pp.278-282.

Hope, T., Slowther, A. and Eccles, J. 2009. Best interests, dementia and the Mental Capacity Act (2005). *Journal of Medical Ethics*. **35** (12), pp.733-738.

Liberman, N. and Trope, Y. 2014. Traversing psychological distance. *Trends in Cognitive Sciences*. **18**(7), pp.364-369.



References continued

Nys, T.V. 2013. The Wreckage of Our Flesh: Dementia, Autonomy and Personhood. In: Denier, Y., et al. eds. *Justice, Luck and Responsibility in Healthcare*. Springer Netherlands, pp. 189-203

Semin, G.R. and Fiedler, K. 1991. The Linguistic Category Model, its Bases, Applications and Range. *European Review of Social Psychology*. **2**(1), pp.1-30.

Stonestreet, E.L. 2014. Love as a Regulative Ideal in Surrogate Decision Making. *Journal of Medicine and Philosophy*. **39** (5), pp. 523-542.

Trope, Y. and Liberman, N. 2010. Construal-Level Theory of Psychological Distance. *Psychological review*. **117**(2), pp.440-463.