

*Building research capacity in nursing,
midwifery and the allied health
professions through a dedicated
funding scheme: lessons from Wales*

Professor Joyce Kenkre, RCBCWales Operational Co-Lead

Dr. Paul Gill, RCBCWales Alumnus

Dr. Emma Tonkin, Community of Scholars Facilitator

Symposium Chair: Professor Daniel Kelly, RCBCWales
Lead for Cardiff University

The Research Capacity Building Collaboration (RCBC) Wales initiative

Professor Joyce Kenkre, RCBCWales Operational Co-Lead

What is RCBCWales?

- Aims
- Scope:
 - 6 university nursing and allied health departments in Wales
 - Registered nurses, midwives, pharmacists and allied health professionals
 - Fellowships across career trajectory
 - Community of Scholars

Funding

Phase 1: The Health Foundation
& Welsh Office of Research and
Development for Health and
Social Care (WORD)
£680,000

Phase 3 (Renewal 6 yrs):
National Institute for
Health & Care Research
(NISCHR)
£1.2million
Tenovus £60K

Phase 1
2005



Phase 2
2008



Phase 3
2011



Phase 4
2016



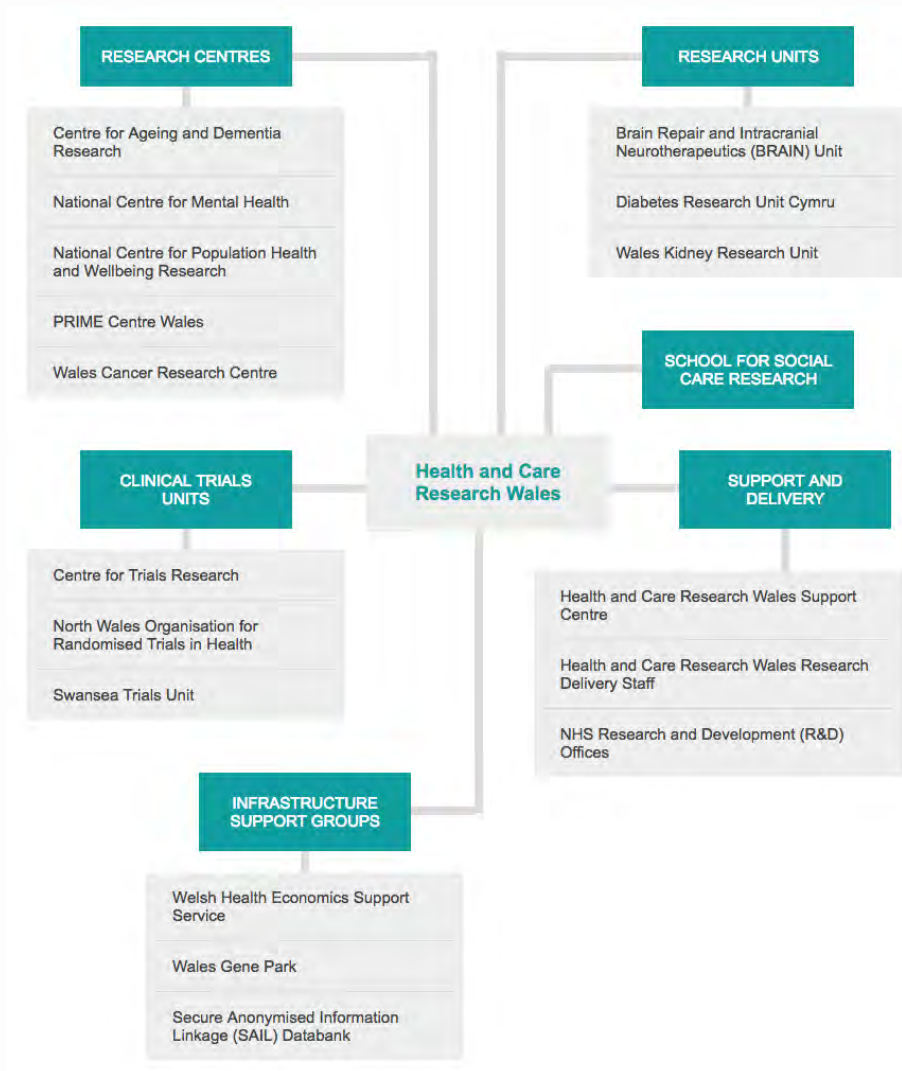
Phase 2: WORD (Renewal 3
years) & Higher Education
Funding Council for Wales
(HEFCW)
£1.2 million

Phase 4 (Renewal 3yrs):
Health and Care
Research Wales
£600K
Tenovus £30K

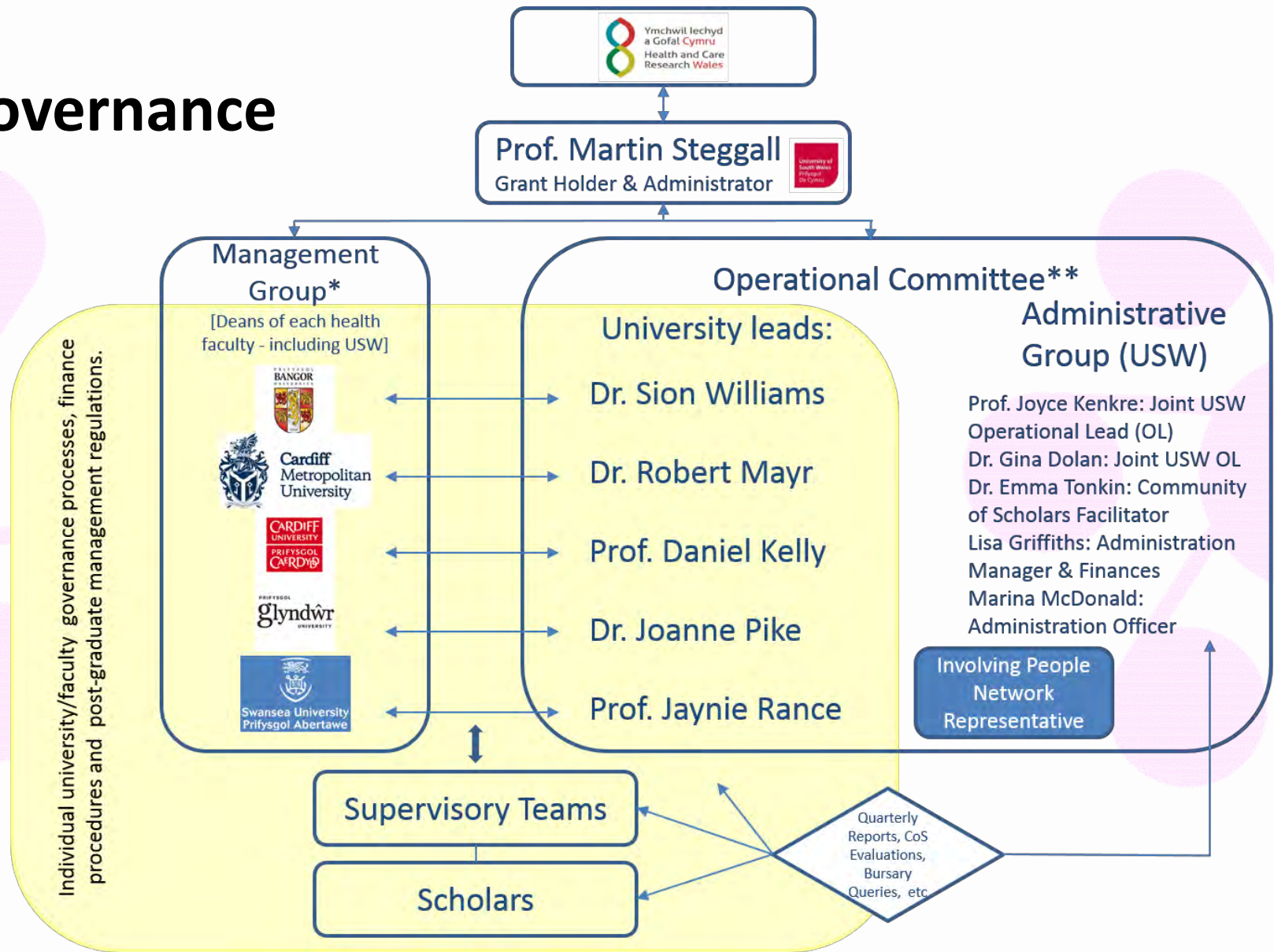
The Finch Report

- **Developing the best research professionals**

Qualified graduate nurses: recommendations for preparing and supporting clinical academic nurses of the future



Governance



*Meets as part of Cyngor (Council of Deans of Health within Wales)

** Meets at least once a year, more often as required. [Currently ever three months since April 2015/new administrative team]

Involving People Network

- public involvement (PI) embedded in our management processes
- ensure a public voice is heard and valued,
- inform and guide our activities and to raise awareness about health-related research conducted by RCBCWales Fellows
- instil in our RCBC Fellows a culture of public involvement in their approach to research and to maximise the impact of research conducted by them through public involvement

18 Professions (9 funded to date)

- Nurses
- Midwives
- AHP (regulated by the HCPC)
- Pharmacists

Arts therapists
Biomedical scientists
Chiropodists/podiatrists
Clinical scientists
Dieticians
Hearing aid dispensers
Occupational therapists
Operating department practitioners

Orthoptists
Paramedics
Physiotherapists
Practitioner psychologists
Prosthetists / orthotists
Radiographers
Social workers in England *
Speech and language therapists

Scope of projects

- Any aspect of NMAHP care including research into:
 - the prevention, detection and diagnosis of disease;
 - the development and evaluation of interventions;
 - the provision of health care services; and
 - the implementation of research findings into practice.
- Align to the themes and priorities of Health and Care Research Wales and the Institution to which they apply
- Have the potential to make a positive impact on the health, wellbeing and prosperity of the people in Wales
- Will contribute to the evidence base for NHS Wales

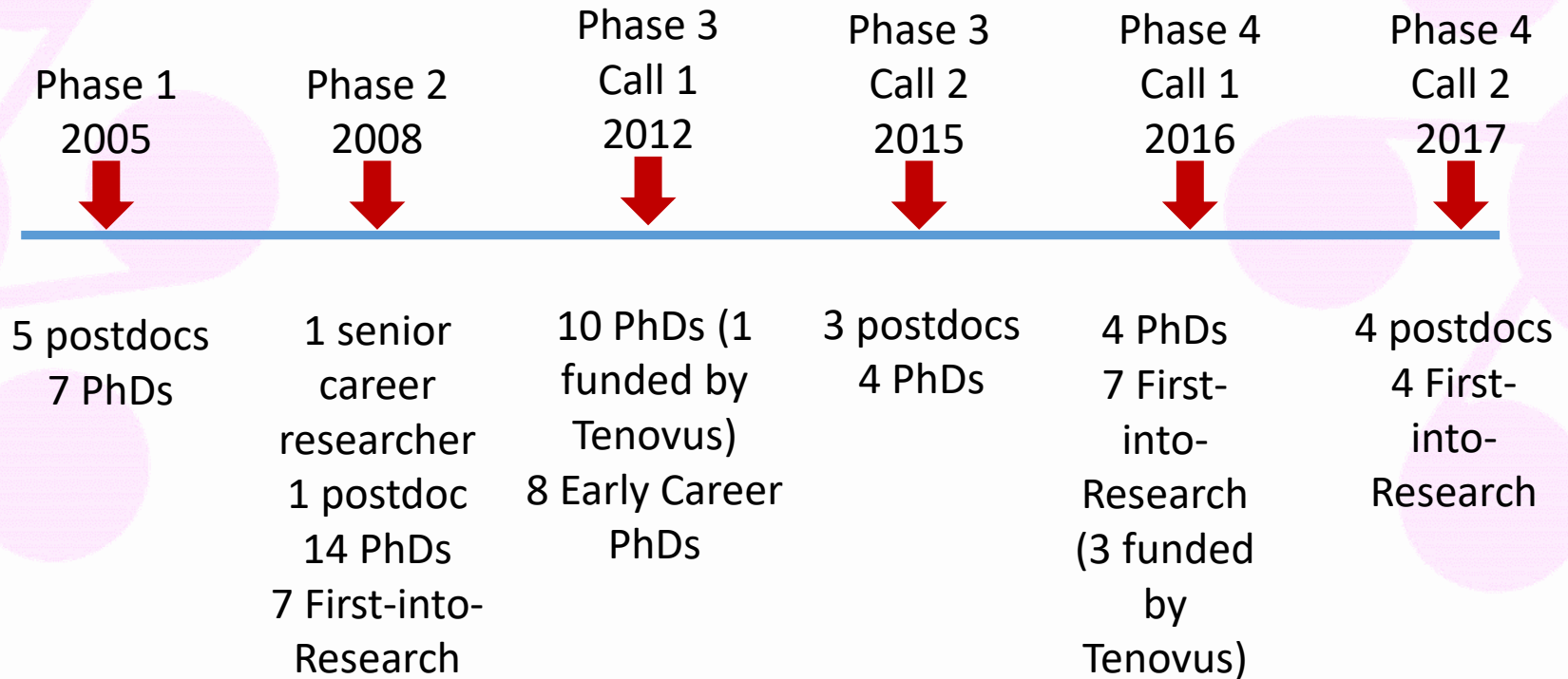
Type of Fellowship

- Senior Career Research Fellow
- Postdoc
- PhD
 - Early Career PhD
- [MPhil]
- First-into-Research

Fellowship costs

- PhD (full time): approx. £62K
- Postdoc 24 months 0.5wte: approx. £61K
 - Bursary/salary + fees/overheads + up to £3750 research costs for PhDs and postdocs
- FiR £10K
 - £6,000 to employer, £3,500 to HEI, £500 research/CoS costs

Funding



What we expect from Fellows, employers and HEIs

- Completion of project
- Attendance at all Community of Scholars sessions
- Submission of quarterly reports
- Support for the applicant with arrangements in place to release Fellow from clinical duties (FiR)
- Sufficient capacity to supervise (FiR and PhD) / mentor (postdoc)
- Adequate training environment and resources

Community of Scholars

- Scope
 - enhanced research training (not a substitution for, or duplication of, training provided by partner unis)
 - personal and professional development
- Six times per year (five bi-monthly one day meetings + one two-day residential)
- Academic facilitator (0.1 wte)
- Varied bespoke programme
- Political awareness and media training

Reflections on an RCBC Wales post-doctoral fellowship

Dr Paul Gill, Senior Lecturer, School of Healthcare Sciences,
Cardiff University



Reflections on a RCBC Wales post-doctoral fellowship

Dr Paul Gill

Senior Lecturer (Adult Nursing)

School of Healthcare Sciences

Cardiff University

Presentation overview

- Aims
- Background to the award
- The post-doctoral fellowship
- Community of Scholars programme
- Subsequent personal and professional developments
- Conclusion

Presentation aims

- To provide a reflective account of the personal and professional benefits of undertaking an RCBC Wales post-doctoral fellowship

Background to the award

- PhD study, 2002-2006, Cardiff University:
 - Qualitative study exploring donor and recipient experiences of live-related kidney transplantation
- What next?

The post-doctoral fellowship

- The award
- The study:
 - a 2 year, multi-centre, longitudinal, qualitative study, exploring participants' experiences of renal transplant failure in the first year post-graft failure
- Research management experience
- Other significant scholarly activity during the award period



Community of Scholars programme

- The CoS programme
- Peer support
- Benefits of the CoS programme



Personal and professional developments

- Provided the foundations for a career in research
- Development of scholarly activity
- Income and outputs
- Career progression
- Ongoing involvement in RCBC Wales

Conclusion

- Personal and professional benefits
- The importance of post-doctoral awards in helping to build research capacity and capability in nursing
- And finally:
 - I'd like to thank RCBC Wales for its support and I'd especially like to thank Professor Maggie Kirk and Ann Yeomans (University of South Wales) for their unwavering help, support and mentorship

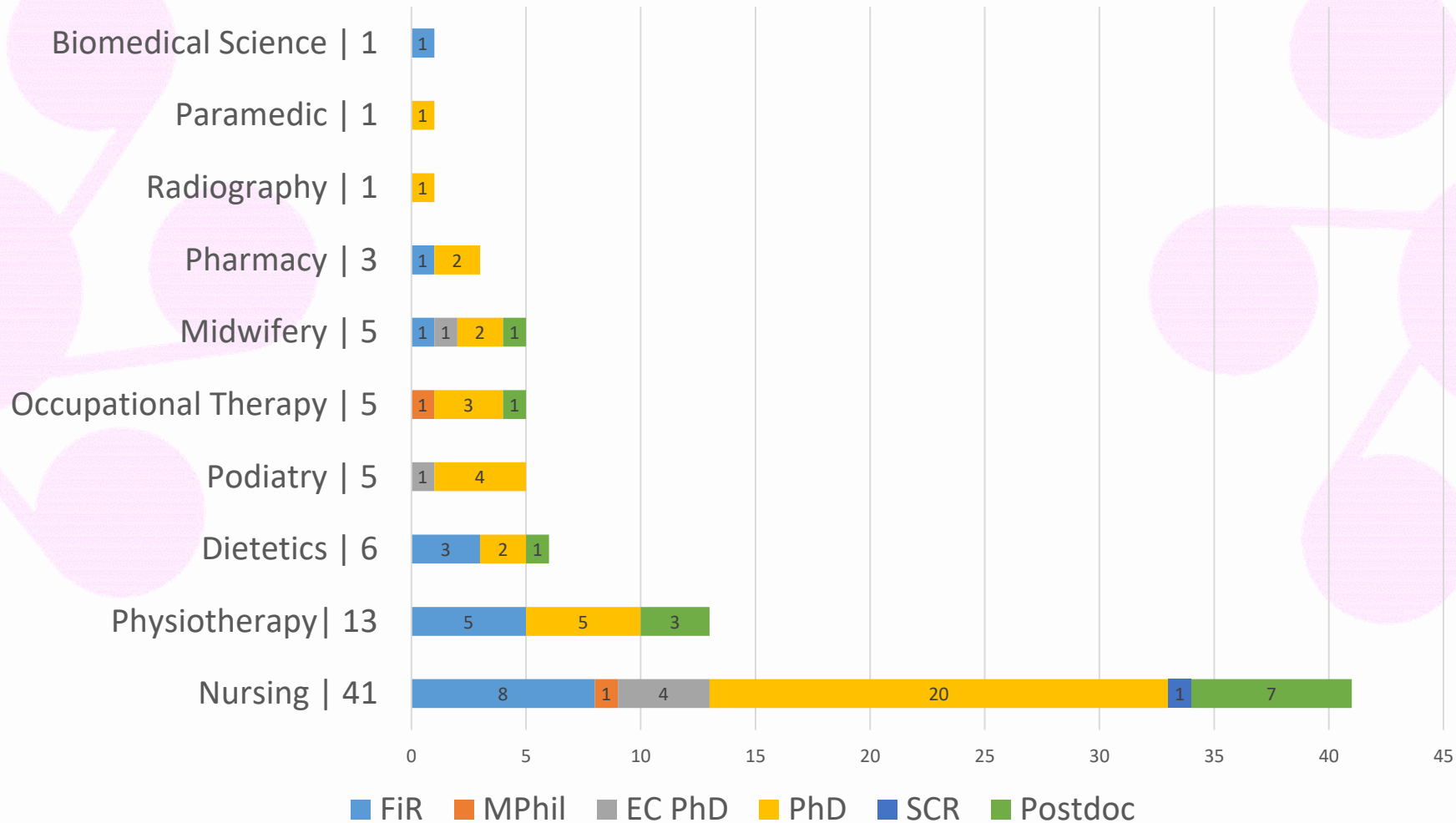
Achievements, impact and future developments of the RCBC Wales programme

Dr. Emma Tonkin, Community of Scholars Facilitator

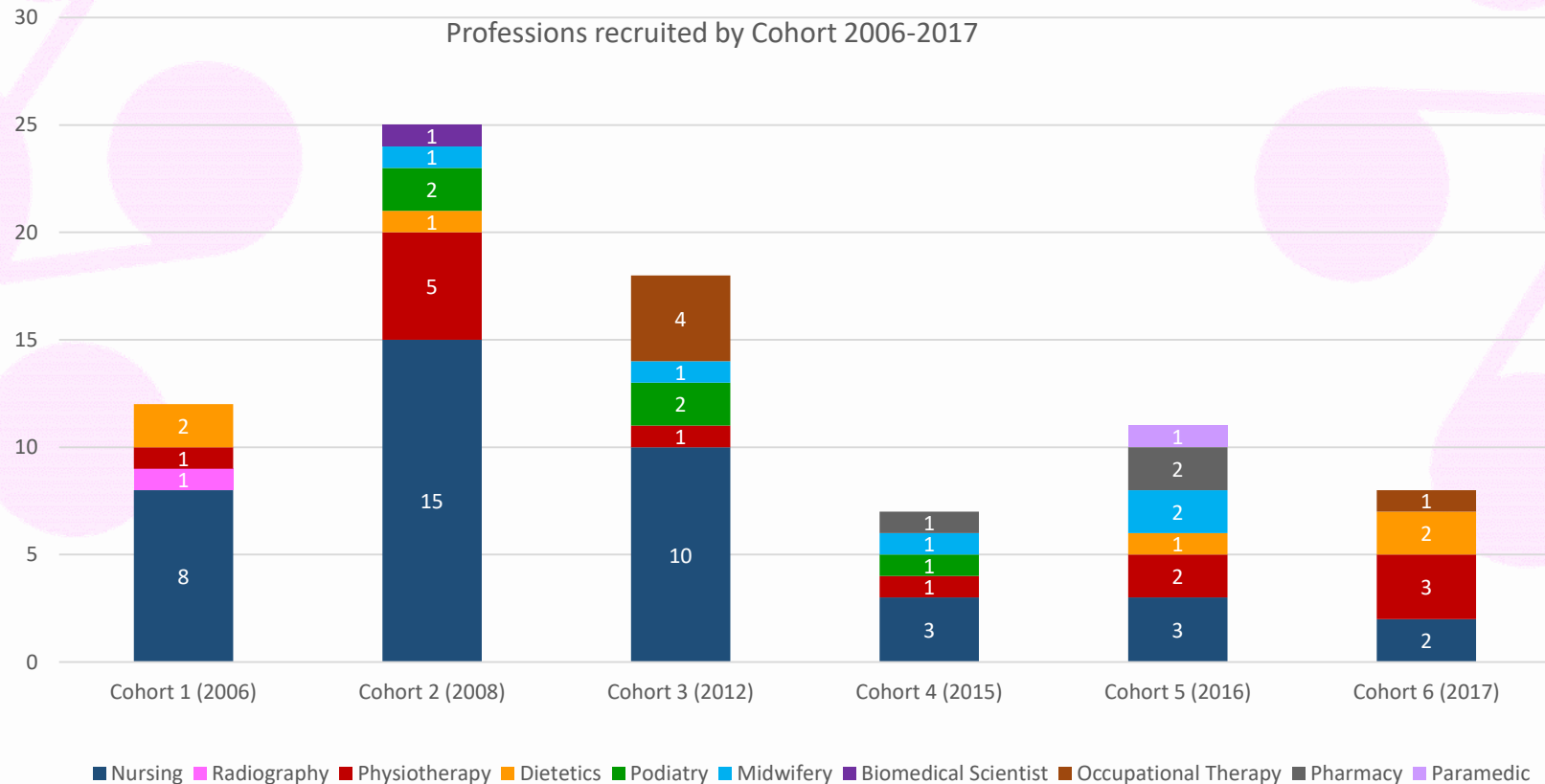
RCBC Fellowships awarded 2006-2017

	Active	Writing up	Withdrawn	Complete	Total
FiR	11	0	1	7	19
MPhil	0	1	0	1	2
PhD	8	6	10	22	46
Post doc	6	0	1	6	13
Senior Fellowship	0	0	0	1	1
TOTAL	25	7	12*	37	81

Distribution of RCBCWales awards across professional groups



Professions recruited across cohorts 2006-2017



Examples of current projects



Examining the benefits and risks of administering blended diet to children and young people who are gastrostomy fed in the community

Sian Thomas, First-into-Research Uni. South Wales /
Aneurin Bevan University Health Board (Nurse)

Co-production of a structured home-based activity programme for people with lung cancer and established weight loss

Nichola Gale, Postdoc Cardiff University
(Physiotherapist)



Reducing hospital admissions: A Realist Evaluation of Welsh Ambulance Service's gatekeeping stratagem

Christopher Evans, PhD student Bangor University /
Welsh Ambulance Service NHS Trust (Paramedic)

Scope of research

- **Community-based care**, including care for older people, transitions in care and cross-sector working in mental health and people with learning disabilities, community-based assessments
- **Management of long-term conditions** and enduring health needs, including assessments, chronic pain management, promoting self-management and mobility, music therapy and rehabilitation
- **Health promotion and healthy living**, e.g. healthy eating, weight gain in pregnancy, infection management
- **Understanding patient and career perspectives and experiences** to improve care, e.g. experiences of young people with Autism Spectrum Disorder, co-morbidities
- **Workforce development, training and practice**, e.g. in mental health, biomedical science, medication monitoring and practice.









Projects – further information

[http://www.rcbcwales.org.uk/
current-scholars/](http://www.rcbcwales.org.uk/current-scholars/)

[http://www.rcbcwales.org.uk/
alumni/](http://www.rcbcwales.org.uk/alumni/)

Alumni

Alumni and their projects are listed by profession. Click on the discipline below to view the research profiles for each group.
Please note, the institution listed is that of the host HEI where the original research was undertaken and not necessarily the current location of the individual.

	Clinical Science		Dietetics
Nursing		Midwifery	
	Occupational Therapy		Physiotherapy
Podiatry		Radiography	

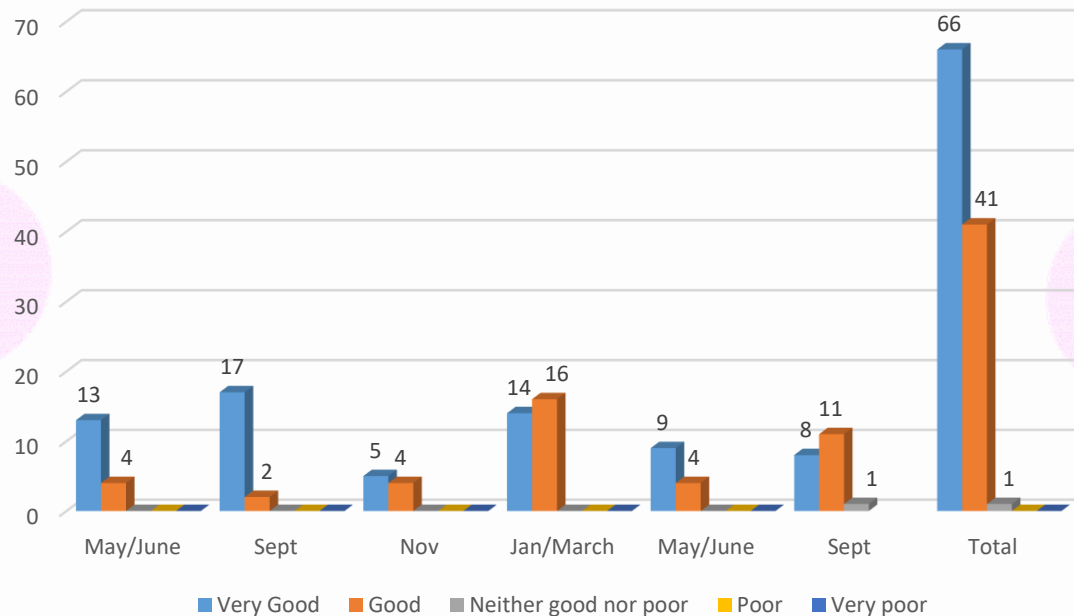
Community of Scholars (CoS)

- 6 sessions per year, including 2-day residential
- Academic facilitator
- Enhanced training
- Support network
- Compulsory



Community of Scholars (CoS)

RCBCWales CoS Evaluations April 2016 to June 2017



The support from RCBC goes much further than just the funding. The opportunity to network and be involved in the Community of Scholars has been invaluable.

Paul Adamson, Physiotherapist, RCBC PhD Student



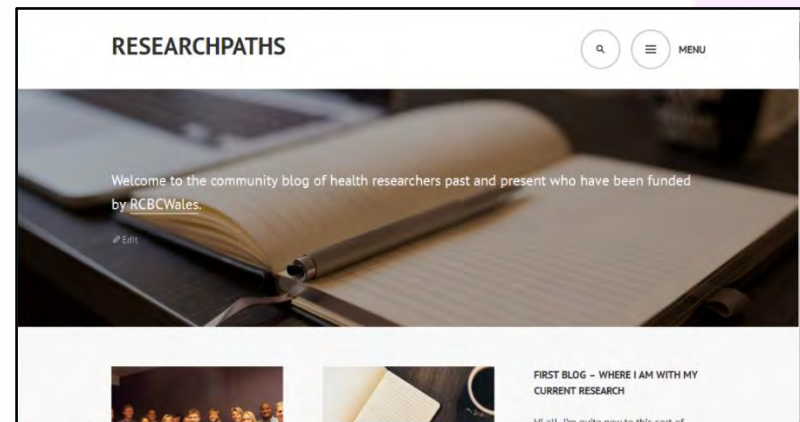
The Community of Scholars (CoS) is a very special thing indeed. I look forward to every CoS day and feel energized and productive afterwards. The range of scholars is the strength of the group. We come from different professions, different backgrounds, different interests and different understandings. We are drawn together by our interest in research borne from clinical practice. The support of the other scholars is brilliant. The insight into each other's experience is sufficient to make a difficult period fade into perspective.

Emma Davies, Pharmacist, RCBCWales PhD Fellow

CoS – considerations and challenges

- Number of Fellows
- ‘Rolling’ cohort
- Range of professions, research interests and research experience
- Clinical pressures

<https://researchpaths.wordpress.com>



Outputs 2006 - 2017

Type of output	Total
Publications	345
Conference presentations	466
Media outputs	44
Grants secured	38
Other outputs	271
TOTAL	1164

Impact: what current fellows think about their studies



**Patricia Masterton-Algar, OT,
RCBC Postdoctoral Fellow**



**Martin Dando, Physio, RCBC
FiR Fellow**

Impact: what current fellows think about their studies

- Impact is already evident – enhancing quality of interventions by occupational therapists for people with motor neurone disease

Helen Carey, OT

- [It will] reduce medicines risk in vulnerable populations to improve outcomes

Emma Davies, Pharmacist

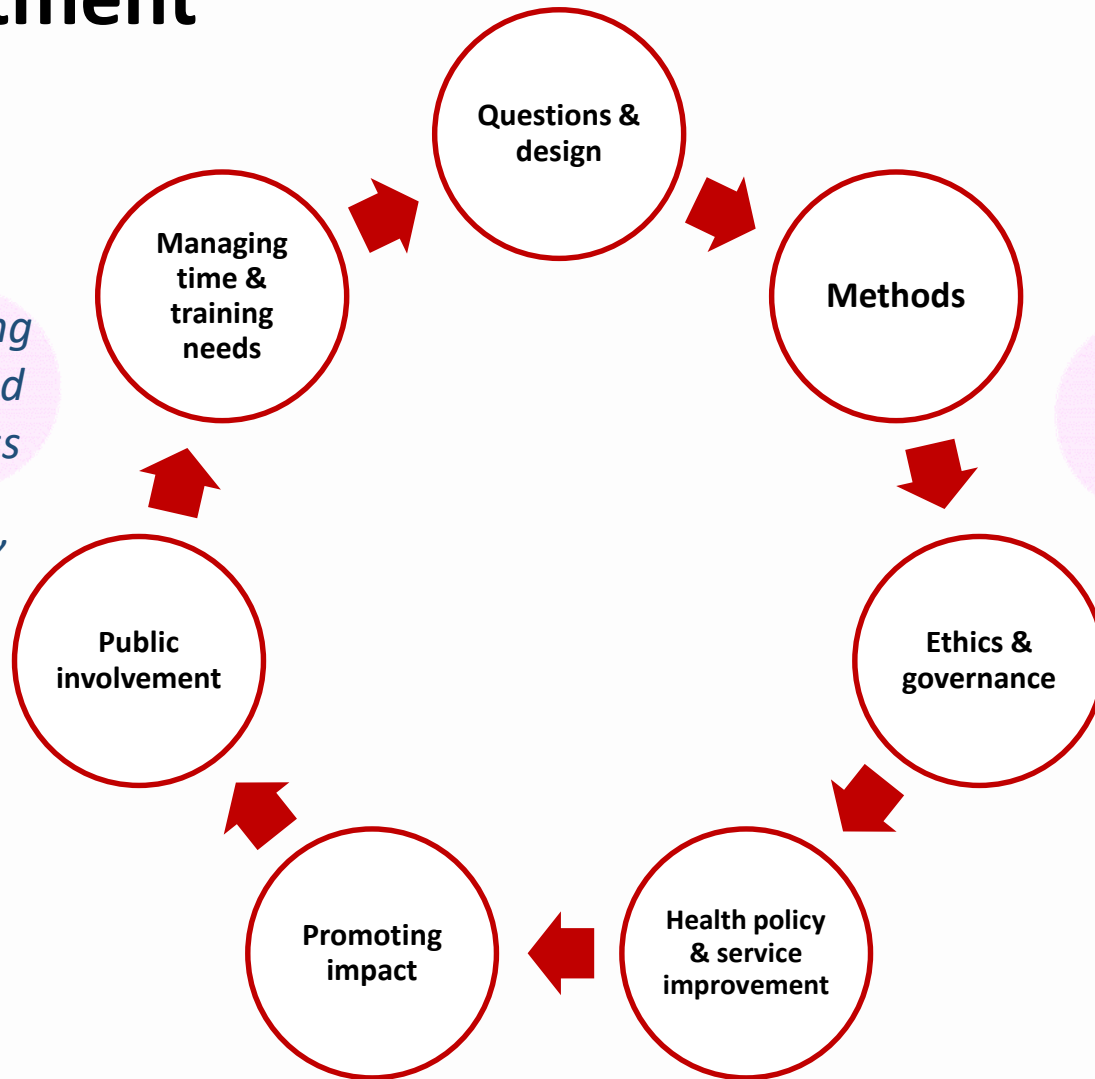
- Young people with cancer will be better supported by their partners thus providing the potential for better outcomes during cancer treatment

Jane Davies, Children's and Young People's Nurse

- Potentially a huge impact! There is a lack of quality research in this area. This innovative multi-centre study in Wales will advise practice around administration of blended diet via gastrostomy and inform a UK study.

Sian Thomas, Nurse Consultant, Child health

Building capacity across the career trajectory: Recruitment



“Despite not being successful, I found the whole process very informative and worthwhile.”

“The setup of the day was great. I really enjoyed the workshops in the morning – the support and advice offered was really valuable.”

Vision for the future

- Current call – 6 First-into-Research (Deadline for stage 1/Eligibility Check – **April 30th**)
- Additional call later in the year
- Spring 2019 showcase
- Renewal of funding application

Critical Success Factors

- Sustained funding
- Commitment of partner institutions
- Multi-disciplinary focus
- Integration across professions and between awards (FiR – postdoc)
- Community of Scholars

Acknowledgements

Prof. Martin Steggall, Grant Holder,
Uni. South Wales

Operational Group:

Prof. Joyce Kenkre & Dr Gina Dolan
(Joint Leads), USW

Prof. Daniel Kelly, Cardiff

Prof. Jaynie Rance, Swansea

Dr. Joanne Pike, Glyndwr

Prof. Maggie Kirk Operational
Group Lead 2015-Dec 2017, USW
(Retired)

Dr. Robert Mayr, Cardiff
Metropolitan

Dr. Sion Williams, Bangor

Lisa Griffiths, Administration
Manager & Finance

Marina McDonald, Administration
Officer



@RCBCWales

www.rcbcwales.org.uk

Thank you!